



Pathways

to a **Healthy Future**



SHARED VISION

"Our vision remains clear: providing leadership for integrated health and healing activities in order to create a self-sustaining, self-directed, inclusive model of healthcare for the region."

—Scott K. Adams, CEO,
Pullman Regional Hospital



Visions for the future



Scott K. Adams
Chief Executive Officer

- ◆ Years at Pullman Regional Hospital: 23
- ◆ Vision for Pullman Regional: To provide effective leadership for integrating our

health and healing activities so that our values guide and inspire our work and science and technology quietly enable people to comfort, encourage, and heal as we pursue a self-sustaining, self-determining model of healthcare for our community.



Bernadette Berney
Chief Human Resources Officer

- ◆ Years at Pullman Regional: 32
- ◆ Vision for Pullman Regional: To continue to create a culture where

staff are engaged and empowered to provide the best care possible to our patients and where personal development is cultivated and valued.



Vishal Chaudhry
Chief Quality and Data Officer

- ◆ Years at Pullman Regional: Less than one
- ◆ Vision for Pullman Regional: Pullman

Regional is a regional leader in providing high-quality, safe and reliable care to our community. Our high level of community engagement, along with a passion for innovation, positions Pullman Regional to continue to lead by example in serving the healthcare needs of the Palouse.



Gerald L. Early, MD
Chief Medical and Innovation Officer

- ◆ Years at Pullman Regional: Less than one
- ◆ Vision for Pullman Regional: To be

nimble and innovative, building upon its strengths to be increasingly effective and progressively kind and caring.

Message from the CEO

Pathways to a healthy future

Looking back on 2015 in this annual report to the community and looking forward to 2016, Pullman Regional Hospital continues to create pathways to a healthy future for our community. We are doing this through a shared vision of leadership in integrating health and healing, values that guide and inspire, and science and technology that quietly enable people to comfort, encourage and heal. This shared commitment will strengthen our efforts to create a self-sustaining model of healthcare for our region.

I am fortunate to work with a strong group of administrative leaders at Pullman Regional who work to guide and support our talented staff of physicians, nurses, clinicians, staff and volunteers in creating this desired destiny of self-directed healthcare for our region. They are focused on creating a unique atmosphere in which innovation thrives and providing personalized, coordinated, compassionate care is the expectation. We are also fortunate to have new and emerging leaders at Pullman Regional who actively work to create a healthy future for our community.

Deep ownership of this vision is created through shared learning that comes from solving problems and creating new ways of delivering care. We are doing this through teamwork and by encouraging staff to seek out innovative, personalized and coordinated care options to provide the best experience for the patient. This is reflected in our continued recognition as a Women's Choice award recipient, our five-star hospital rating and our consistently high patient satisfaction.

I am inspired every day by the people I work with—by the dedicated and highly trained clinical staff and by our passionate volunteers and how they contribute to creating our vision for the future. As always, I hope you enjoy reading this annual report about your five-star hospital. Information featured includes financials, innovative care programs, and stories on friends and supporters. I hope it inspires you to support Pullman Regional as we strive to create the best healthcare for our region.

Scott K. Adams
Chief Executive Officer

“The future is not some place we are going to but one we are creating. The paths are not to be found, but made, and the activity of making them changes both the maker and the destination.”
—John Schaar, political scientist

Pullman Regional rated five stars

In 2015, Pullman Regional received the highest ranking possible in overall patient experience by the Centers for Medicare & Medicaid Services. The ratings are based on data from the Hospital Consumer Assessment of Healthcare Providers and Systems Survey (HCAHPS) measures that are included in Hospital Compare. The latest HCAHPS data from January 2014 through December 2014 shows only 207 hospitals out of 3,539 earned a five-star HCAHPS summary star rating. HCAHPS has been in use since 2006 to measure patients' perspectives of hospital care, and includes topics such as:

- How well nurses and doctors communicated with patients.
- How responsive the hospital staff was to patient needs.
- How clean and quiet hospital environments were.
- How well patients were prepared for post-hospital settings.



Women choose Pullman Regional

In 2015, for the second year in a row, Pullman Regional Hospital received the Women's Choice Award as one of America's Best Hospitals in Obstetrics by Women Certified. Women chose Pullman Regional's BirthPlace in record numbers in 2015, with the highest number of deliveries—455—on record.



Most Wired—again!

For the ninth consecutive year, Pullman Regional Hospital was named one of the Most Wired Hospitals in the nation. The Most Wired survey is administered by *Hospitals & Health Networks* magazine, which recognizes hospitals for utilizing information technology to better connect care providers and patient information.



Jeannie M. Eylar, RN

Chief Clinical Officer

- ◆ Years at Pullman Regional: 26
- ◆ Vision for Pullman Regional: To continue to expand the culture that has been created here, which results in an environment where patients, visitors, staff and physicians consistently experience a high level of satisfaction.



Steven D. Febus

Chief Financial Officer

- ◆ Years at Pullman Regional: 28
- ◆ Vision for Pullman Regional: To provide the highest quality care at a reasonable cost.



Megan Guido

Chief Marketing and Community Relations Officer

- ◆ Years at Pullman Regional: 11
- ◆ Vision for Pullman Regional: To engage the region with its five-star hospital through giving of their time, sharing their stories or making a financial gift.



Rueben Mayes

Chief Development Officer

- ◆ Years at Pullman Regional: 3
- ◆ Vision for Pullman Regional: To have everyone in the Palouse region philanthropically support Pullman Regional Hospital.



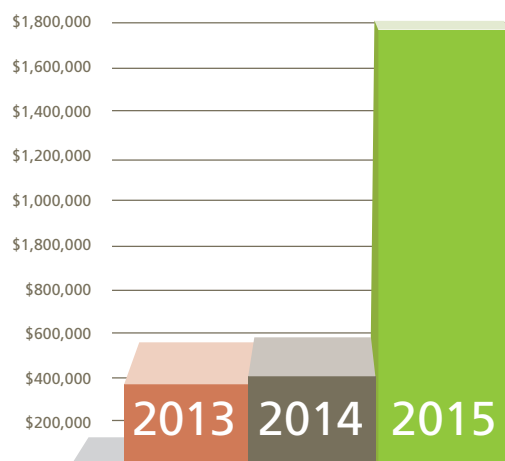
2015 year in review

2015

YEAR IN REVIEW

Financial facts and figures

Total margin



Pullman Regional Hospital's 2015 positive bottom line of \$1.79 million will allow the hospital to reinvest in improved technology and expand services.

Pullman Regional Hospital vital signs

We are a community of:

328 full-time employees



224

community & student volunteers



As a team, we served:



1,392

men, women, children and newborns as inpatients



3,796 patient days



13,832
observation hours of care

455



births

surgical cases

4,407



11,797 emergency visits



93,924

laboratory tests



30,357

diagnostic imaging

83%

Surgical patients

17%

Endoscopy patients



Center for Learning & Innovation Breaking through barriers for health

Pullman Regional Hospital's Center for Learning & Innovation recently launched the Social Work Extender Program designed to identify and address barriers to health faced by populations in Whitman County and reduce the use of emergency department care. In a unique partnership with Washington State University (WSU), Human Development undergraduate students are serving as social work extenders in internships through the hospital. As social work extenders, the students are working in primary care clinics in Pullman, at the Palouse Free Clinic, and at independent living and

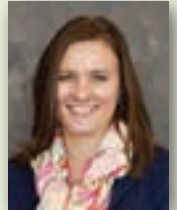


low-income housing facilities in Whitman County. They are providing coaching for self-care of chronic conditions and helping to set health goals and action plans.

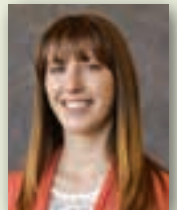
Since the program's start in August 2014, the social work extender interns have offered outpatient support to more

than 90 residents in Whitman County.

Through total funding of more than \$120,000 from Empire Health Foundation in Spokane, we are able to provide this service throughout Whitman County and support the work of WSU Human Development students.



Rebecca Hatley,
Program
Coordinator



Ruth Hensel,
Social Work
Extender Intern

Pullman Regional Hospital chosen to implement Honoring Choices Pacific Northwest

Pullman Regional Hospital (PRH) was recently selected among 39 hospitals and clinics in Washington state to participate in the first cohort of organizations to implement Honoring Choices Pacific Northwest, a program to facilitate conversations about advance care planning to improve end-of-life care. The program includes guidance and tools to discuss and plan for a person's future healthcare decisions so that these wishes may be honored.

Katie Evermann Druffel, LICSW, Director of Social Work, is leading the implementation for PRH. A \$10,000 grant from Empire Health Foundation in Spokane funded training for advance care planning to team members.

"One of the most important conversations you can have with your healthcare providers and your loved ones is about what kind of care you want if you should become critically ill or are unable to speak for

yourself," Evermann Druffel says.

"We want to make sure that our patients are cared for in the way they want, but that's very difficult if both patients and physicians avoid the topic," she says. "Our goal is to make that conversation easier for both providers and patients, so you can receive care that is consistent with your goals and values."

PRH will partner with Pullman Family Medicine in a pilot program dedicated to organizing the referral, storage and retrieval of advance care plans for healthy adults. The advance care planning program will also be integrated with hospital-based care—the hospital already has a Quality of Life team dedicated to palliative care and honoring patient choices at the end of life.

The Steering Committee & Implementation Team consists of:

■ Silvia Bowker, Administrator at Pullman Family Medicine.

■ Ben Adkins, MD, Pullman Family Medicine.

■ Jeannie Eylar, Chief Clinical Officer, PRH.

■ Katie Evermann Druffel, Social Services Director, PRH.

■ Jessica Rivers, Volunteer Services Coordinator, PRH.

■ Chris Jensen, Information Technology Director, PRH.

■ Cathy Murphy, Clinical Informatics Director, PRH.

■ Sandy Frisbey, Health Information Management Director, PRH.

Honoring Choices Pacific Northwest is an initiative of the Washington State Hospital Association and the Washington State Medical Association with a goal to promote advance care planning by increasing awareness and providing training and resources.



Visit www.HonoringChoicesPNW.org.

Pullman Regional Hospital highlights



The Quality of Life team at Pullman Regional Hospital

Pullman Regional Hospital is a member of the Center to Advance Palliative Care (CAPC). As a member institution, staff has access to essential tools, training and technical assistance for frontline clinicians.

PCLC Palliative Care Leadership Centers™

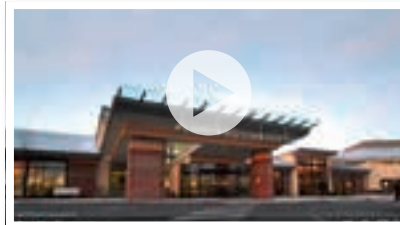
Preserving quality of life

Pullman Regional Hospital's Center for Learning & Innovation provides a platform for Palliative Care program development. Palliative care provides specialized medical care for people at any age and any stage of serious or chronic illness, such as cancer, Parkinson's disease or Lou Gehrig's disease (ALS). The goal of palliative care is to give the patient and family the highest quality of life for the longest possible time. Palliative care can be provided along with curative treatments. Katie Evermann Druffel, LICSW, Director of Social Work, and Joan Hendrickson, RN, Assistant Director of Medical-Surgical Unit (MSU) at Pullman Regional, received advanced training in palliative care from the

Cambia Palliative Care Center for Excellence at the University of Washington. The training included palliative care communication, inter-professional team practice, systems metrics and integration, reflections, and small group discussion.

The hospital-based Quality of Life Team is an integral part of the Palliative Care program development. The Quality of Life Team is an interdisciplinary team of healthcare professionals:

- Rod Story, MD, Hospitalist, board-certified in palliative care.
- Katie Evermann Druffel, LICSW, Director of Social Work.
- Joan Hendrickson, RN, Assistant Director of MSU.
- Renee Heimbigner, Pharmacist.



Watch a video about this program and Pullman Regional's Quality of Life Team at https://youtu.be/XsULh_Y5fqw.

- Steve Dunning, RT, Director of Respiratory Therapy.
- Dianne Lowe, Volunteer Chaplain.
- Anna Engle, RN, certified in end-of-life nursing education.
- Paula Fealy, MSU Unit Clerk.

The 2015 Health Innovation Summit

The Health Innovation Summit is fast becoming the region's premier event focused on innovation in healthcare. More than 140 friends of Pullman Regional Hospital (PRH), business leaders and medical professionals turned out in October to learn how PRH is leading innovative healthcare efforts that are decreasing costs and improving patient experience and quality of care.

Stephanie Fosback, MD, spoke on new innovations in primary care delivery. The talk highlighted wave scheduling that Palouse Medical is now using in order to provide more time for patients with providers and to provide a team approach to care. In addition, new Chief Medical & Innovation Officer Gerald Early, MD, spoke to the crowd. There

were information poster sessions that provided updates on new innovations focusing on advance care planning, Badger Braces (ankle braces), combined speech and physical therapies, social work extenders, Sunnyside Stories, breast tomosynthesis technology, total joint replacement preparation, and the Palouse Knowledge Corridor.

—See pictures on next page.

Gerald Early, MD, speaks as the new Chief Medical and Innovation Officer at Pullman Regional Hospital.



Carrie Coen, DPT, Director of Summit Therapy & Health Services, explains the new Joint Replacement Preparation Class to guests.



Ed Robertson, PT; Ed Tingstad, MD, Inland Orthopaedics; and Jack Fulfs, Foundation Board member.



Stephanie Fosback, MD, Palouse Medical, delivers the keynote address on innovations in primary care delivery.

Carol Gordon, PhD A Pioneer for the Women's and Children's Center

In 2015, Carol Gordon, PhD, made Pullman Regional Hospital history with a leading gift in support of the Center for Women's & Children's Health. The Center includes health and wellness services for genetic counseling, pediatric medical services, mammography, physical therapy and more.

"This investment in the program makes a statement to the community that women's health is important," says Scott K. Adams, Pullman Regional Hospital CEO. "We are grateful for her leadership, thoughtfulness and generosity to set a pathway for our region."

Dr. Gordon's \$600,000 gift, the largest single gift in the hospital's history, perpetuates her legacy of pioneering for women and health. From 1962 to 1983, Dr. Gordon served as chair of Washington State University's Women's Physical Education Department; she also held the role of Director of Athletics for Women from 1962 to 1975. Dr. Gordon's model of blazing trails



Honored guest Carol Gordon, PhD; Cathy Claussen; Steve Pennington, MD; and Rachel Pennington

inspired the nation through her 1973 to 1974 presidency of the Association for Intercollegiate Athletics for Women as she played a crucial role in determining how the newly enacted Title IX law prohibiting sex discrimination in educational institutions would influence women's intercollegiate athletics.

Expanding our services



Ed Harrich, Director of Surgical Services, in one of the current operating rooms.

Building on surgical excellence

The time to expand is now

Surgeries performed at Pullman Regional Hospital (PRH) have increased by 20 percent over the past five years, and demand from physicians continues to grow. This demand is necessitating an expansion of the current surgical services to build a fourth operating room and upgrade key technology components in our existing three operating rooms.

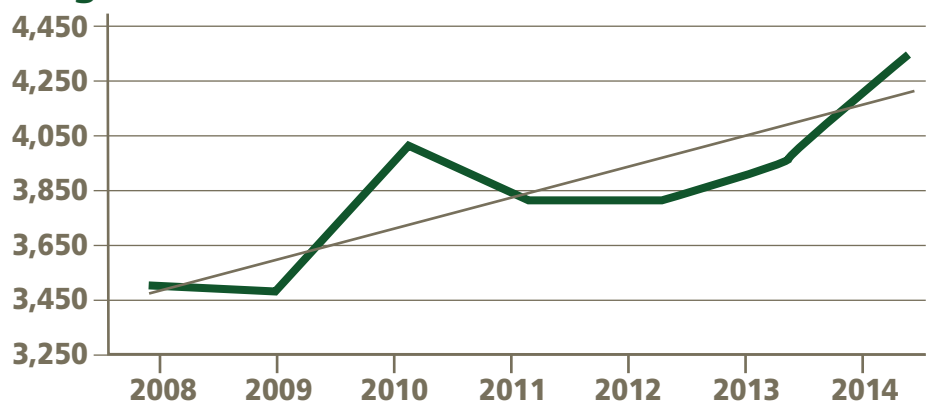
The PRH Board of Commissioners has identified the expansion of surgical space as the hospital's highest need for 2016. To meet the current and future needs of our community through surgical services, \$1.75 million dollars will be required to remodel the existing space for an additional surgical suite and to upgrade equipment and technology. The hospital and Foundation are partnering to fund the project.

The three operating rooms are fully utilized 85 percent of the time and are used by 20 physicians (general surgeons; orthopedic surgeons; urologists; an ophthalmologist; an ear, nose and throat specialist; a gynecologist; and a gastroenterologist). Working with Inland

Orthopaedics, PRH is actively recruiting additional orthopedic surgeons to the area. Adding to the demand is the fact that PRH is the only hospital in the region to offer daVinci robotic-assisted surgery, which has proven beneficial for multiple surgical specialties. Currently, eight local surgeons are trained to use the daVinci system.

"Many physicians have stated they prefer to complete procedures at Pullman Regional Hospital because of our integrated technology systems and outstanding reputation for patient care," says Scott K. Adams, CEO. "In order to accommodate the number of physicians and surgeries, an additional operating room is necessary."

Surgical cases with trendline



More and more surgeons and patients are choosing Pullman Regional Hospital, a five-star facility, for surgical solutions. In the last five years, demand has steadily increased to 1,000 more surgical cases per year—pushing our hospital's surgical capacity to its limit.

“I like operating here because my patients are taken care of. I feel pretty lucky as a surgeon to live in a community that has such an excellent facility.”

—Ed Tingstad, MD, Orthopedic Surgeon, Inland Orthopaedics



Rendering by Design West Architects

“One of the reasons why we’re so busy is we do a good job,” says Ed Tingstad, MD, Orthopedic Surgeon, Inland Orthopaedics. “Our response to that is to grow. The time is now.”

The surgical remodel also includes upgrading the three existing operating rooms with the latest in surgical technology, such as a viewing monitor, LED lighting, new surgical booms and high-definition cameras.

“We need to upgrade our existing operating rooms to keep pace with ever-changing surgical care and technology,” says Ed Harrich, Director of Surgical Services.

“It [PRH] is the best hospital in the area,” says Dr. Tingstad. “From a statistical standpoint, we have extremely low complication and infection rates and the most consistent and experienced operating room staff in the area. I like operating here because my patients are taken care of. I feel pretty lucky as a surgeon to live in a community that has such an excellent facility.”



To learn how you can help us
build on surgical excellence,
go to www.pullmanregional.org.

SURGERY EXPANSION



- Key technology upgrades to existing operating rooms include:
 - Media control system.
 - Surgical booms and arms.
 - LED surgical lighting.
 - 55-inch wall-mounted viewing monitor.
 - In-line cameras and video.
 - High-definition video streaming capabilities for educating medical students and patients.

Schweitzer family doubles gift for surgery expansion project at Pullman Regional Hospital

Community leaders Ed and Beatriz Schweitzer made an additional \$350,000 gift—for a total of \$700,000—to help fund the expansion of surgical services and surgical technology upgrade for Pullman Regional Hospital.

“Our hospital has served our family and the entire community so well,” says Beatriz Schweitzer. “We are pleased to do our part to support this important resource.”

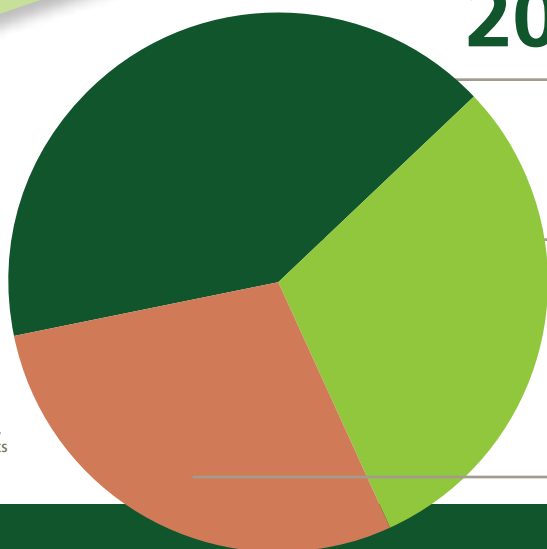
“I asked Scott how much he needed to build the new surgery suite, he said ‘\$340,000,’” says Ed Schweitzer. “So Beatriz and I looked at each other and decided to double our original gift.”

“Once again, Ed and Beatriz demonstrate extraordinary generosity, vision and leadership,” says Pullman Regional Hospital CEO Scott K. Adams. “The Schweitzer family is helping to ensure our community has better access to the best surgical care.”

Thank you for partnering with us

Pullman Regional Hospital Foundation 2015 FUNDRAISING

These amounts reflect all gifts, grants, planned gifts and pledges received.



Endowment for Quality & Access

\$1,014,419

Annual Giving

\$750,211

Innovation

\$713,817

TOTAL RAISED

\$2,478,447

A shared vision means a great hospital

The work of the Pullman Regional Hospital (PRH) Foundation Board and staff over the past year has been focused on strengthening three key areas: annual giving, the Endowment for Quality & Access, and innovation.

After concluding our third year utilizing a comprehensive approach, we continue to learn how community members want to engage and express their generosity. Community members value PRH's standard of excellence in patient care and having access to high-quality care.

Our work to educate current and prospective donors about the highest annual hospital needs for vital technology and equipment is yielding phenomenal support. Thanks to the generosity of our community, the hospital will purchase all 13 items identified as highest needs for 2015, which will enhance heart health and women's and children's health at PRH.

Our dedicated volunteers on the

Endowment for Quality & Access Giving Committee are making a significant impact through meaningful conversations; their efforts are producing considerable gifts and invaluable relationships. Over \$1 million in gifts of grain, property, bequests, insurance and cash was donated in support of the Endowment for Quality & Access in 2015.

Through our partnerships with local, regional and federal granting agencies, we are providing needed services through innovative approaches to healthcare delivery. In 2015, grants funded aging-in-place projects for low-income seniors, community Internet literacy education, staff education and medication safety programs.

It takes committed volunteer leaders, dedicated staff and a hospital administration with great vision to achieve excellence. We are doing that right here on the Palouse. My vision is that every person in the region is inspired to make a philanthropic gift to support one of the best hospitals in the country. There

is much work to be done, but it is humbling to see how far we have come and how many people have come together to help.

Thank you for caring enough to partner with us in 2015 to help PRH be self-sustaining and self-determining. I have only the deepest of gratitude for the opportunity to be a steward of your generosity. We look forward to new challenges and opportunities in 2016 and know we are heading in the right direction.

With best regards,

Rueben Mayes, MBA, CFRE
Chief Development Officer
Pullman Regional Hospital Foundation



“As Pullman and the Palouse continue to grow and thrive, our hospital must grow and thrive as well. Over the past several years, Pullman Regional Hospital Foundation has turned to grateful patients, business partners, community groups and individual community members to help us meet the ever-expanding healthcare needs of the region. This year was no different. Together, we helped ensure continuation of the care and quality we have come to expect from Pullman Regional Hospital. Thank you!”

—Pat Wright, 2015 Annual Giving for Excellence Fund Drive Chair, Community Leader and Pullman Regional Hospital Foundation Board Vice President



Our giving community in support of the hospital's highest needs

A successful 2015 Annual Giving program ensured Pullman Regional Hospital's highest needs were fulfilled, enhancing heart care and care for women and children through the purchase of 13 highest-need items.



The four Pullman auto dealers (Jess Ford of Pullman; Wysup Chrysler, Jeep, Dodge, Ram & Imports; Chipman & Taylor Chevrolet; and Toyota of Pullman) joined together for a third year to help support the hospital's highest needs by donating funds—\$100 per new or used vehicle sold during the month of August—to Pullman Regional.

A record turnout of 124 golfers, sponsors and volunteers supported the hospital's highest needs at the 10th annual Pullman Regional Hospital Foundation Golf Classic—the “most fun” golf tournament in the region. The 2015 tournament, presented by Columbia Bank, was the highest grossing tournament—with the most players—in the 10-year history of this event.



Over 450 Washington State University (WSU) students danced for 12 hours straight to raise funds for women's and children's healthcare at Pullman Regional. Women from WSU Pi Beta Phi claimed the second annual WSU Dance-A-Thon trophy for their philanthropic leadership.

At the 2015 Pullman Regional Hospital Foundation Gala—presented by Avista—277 hospital supporters and community leaders gathered to celebrate accomplishing 2014 fundraising goals for the hospital's highest needs, including 3-D tomosynthesis mammography, stereotactic technology and patient room expansion. Guests, sponsors and raffle item donors helped raise over \$105,000 for the hospital's 2015 highest needs to enhance heart health and women's and children's health.



The first year of the Women's Leadership Guild program, chaired by Ashley Alred, fused leadership and a shared vision and empowered women and children through the power of philanthropy. Board members Judy Kolde, Shelley Bennett and Colleen MacDonald recruited more than 20 women to join with them. In September, members of the Women's Leadership Guild voted to fully fund five regional non-profit programs at \$2,000 apiece in addition to supporting the hospital's highest needs.





Co-chairs Mike Sodorff and Carol Chipman

Endowment for Quality & Access

Ensuring a legacy of providing exceptional care lives on

The Endowment for Quality & Access, established in December 2013, is a pathway to sustaining high-quality medical care at Pullman Regional Hospital (PRH) as increased regulations, healthcare reform and potential budget cuts threaten the stability of hospital resources. This \$10 million campaign is a first step toward a long-term goal to fund a \$75 million endowment to support ongoing access to high-quality medical services in this region.

The founding volunteer leaders on the campaign steering committee are

community members and farmers, people with deep roots where we live who care about the quality of health and healthcare.

Co-chairs Mike Sodorff and Carol Chipman were joined by committee members Greg Bloom; Jack Fulf; Gail Gearhiser; Ken Gibson; Stephen Hall, MD; Fritz Hughes; Pat Wright; and Jen Greeny.

“Through meaningful conversations and outreach, this group of volunteers has driven the success of the Endowment for Quality & Access,” says Rueben Mayes, PRH Foundation Chief Development Officer.

New goals for new Giving Committee

In July of 2015, the Endowment for Quality & Access steering committee transitioned to a Giving Committee. Giving Committee members, in coordination with the Foundation staff, continue to reach out and educate community members. Committee members Carol Chipman, Jack Fulf, Fritz Hughes, Mike McNamara, Rene Scourey, Josh Smart and Pat Wright have set their sights on trying to secure at least \$1 million each year.

Among the founding steering committee members continuing with the Giving Committee is Jack Fulf. “I want to contribute to ensuring we are good stewards of our funds and our people—we want to keep that ability to make decisions on a local basis,” Fulf says. “We have to have a strong hospital.”



Jack Fulf, Giving Committee member

2015 philanthropy-funded medical technology

Heart care medical technology:

- Code-ready defibrillator units for six hospital departments to resuscitate pediatric and adult patients.
- Two EKG (electrocardiogram) monitors used to detect heart problems and test for heart disease.
- King of Hearts patient-activated cardiac monitor, which is worn outside of the hospital to record cardiac symptoms.
- Emergent care patient monitor for wireless cardiac monitoring in the Emergency Department.
- Summit Therapy & Health Services patient locker room renovation to update a 20-year-old facility.
- Cardiac rehabilitation workstation for analyzing patient data and supporting patient recovery.
- Woodway patient therapy treadmill for rehabilitation after surgery, injury or disuse.
- Therapeutic hypothermia system for patient therapy after a cardiac arrest and during massive transfusions.

Women's and children's health medical technology:

- BirthPlace labor bed to provide comfort and security for both the mother and caregiver.



Stephen Hall, MD, with the Little family

- Neonatal crib used for advanced treatment and newborn therapy in the BirthPlace nursery.
- BirthPlace monitor for high-risk infants used to stabilize, assess and observe prior to transport.
- Two mini telemetry labor monitors for wireless monitoring of a soon-to-be-born baby.
- MyoSure fibroid and tissue removal system, which eliminates the need to cut or remove part of the uterus.



GUARDIAN ANGEL PROGRAM

PULLMAN REGIONAL HOSPITAL

The Guardian Angel program gives grateful patients an opportunity to honor a physician or hospital staff member while supporting the hospital's highest needs.

2015 Guardian Angel recipients

• Lenora Waelti, Summit Therapy & Health Services

• Ed Tingstad, MD, Inland Orthopaedic Surgery & Sports Medicine Clinic

• John Visger, MD, Palouse Surgeons, LLC

• Charles Jacobson, MD, Inland Orthopaedic Surgery & Sports Medicine Clinic

• Jaime Bowman, MD, Palouse Medical and Director of Medical Education for Pullman Regional Hospital

• Pullman Regional Hospital Emergency Department Staff and Nursing Staff

All of these exceptional providers were honored by Carlton and Rosemary Waldrop.

Thank you

The Foundation Board and staff thank all those who chose to financially support Pullman Regional Hospital through gifts, grants, pledges and long-term commitments.

\$1,000,000– \$500,000

Dr. Carol Gordon

\$499,999– \$100,000

Jeff and Jill Elbracht
Dr. Kenneth Gibson
The Norm and Jessie Druffel Family Endowment
Michael and Carol Rydbom
Ed and Beatriz Schweitzer

\$99,999–\$50,000

Coverys
Empire Health Foundation
Allen Hood
Jan Pyle

\$49,999–\$25,000

Cris and Pam Kincaid
James and Marji Neill
Mike and Christine Sodorff

\$24,999–\$10,000

Spencer and Rae Alisch
Avista Corporation
Mitch and Mary Jo Chandler
Laura Child
Dr. James and Bridget Clark
Critical Access Hospital Network
Ed and Toni Harrich
Michael and Becky Highfill

Lauré and Shawn Larsen
Ken and Suzanne Myklebust
National Network of Libraries of Medicine–Pacific Northwest Region

Palouse Prostate Cancer Program Endowment
Pullman Lions Club
Richard Druffel & Sons
Gary and Susan Schell
Jesse and Alison Weigley
Patrick and Karen Wuestney

Wysup Chrysler, Jeep, Dodge, Ram & Imports

\$9,999–\$5,000

Scott and Sharon Adams
Gerald Arnold
John and Linda Chaplin
Chipman & Taylor Chevrolet
Columbia Bank
Decagon Devices, Inc.
Hayden Ross, PLLC
Darrol and Susan Hval
Jess Ford of Pullman
Robert Lange
Michael McNamara
Eric Olson
Frances Pettit
Les and Tracy Ruhs
Schweitzer Engineering Laboratories, Inc.

Vivian Shuley
John and Patricia Snyder
Toyota Dealer Match Program
Toyota of Pullman

\$4,999–\$2,500

Allegra Printing & Design
Aon Risk Services/Aon Hewitt
Shelley Bennett/Palouse Commercial Real Estate
Daniel Boone
Dr. Richard Caggiano and Karen Karpman
Philip and Kim Cook
Edward Jones/Greg Bloom
Greg and Jeannie Eylar
Bill and Felicia Gaskins
Dr. Karen Geheb and Michael Harris
Jack and BettyJo Hilliard
Dr. Moore Johnson
Karl Hoover & Associates, LLC
Velle and Judy Kolde
KQQQ & KHTR Radio
Rueben and Marie Mayes
Sara Moore
Peg Motley
Neill's Flowers and Gifts
Michael Neff and Sandy O'Keefe
Suzanne Polle
RE/MAX Home and Land
Bob and Miriam Rehwaldt

Jerman and Marguerite Rose
Dr. Gordon Sedlacek
Swire Coca-Cola
Ernie and Marie Weiss

\$2,499–\$1,000

Robert and Carolyn Allan
Darren and Ashley Alred
Dr. Stephen and Verna Bergmann
Mike and Bernadette Berney
Stanley Buckley
Marcia Buhler
Brandon and Marilyn Burch
Campbell Scientific, Inc.
Matt and Lynda Carey
Carol Chipman
Barbara Christensen
Gavin Clark
Charles and Carrie Coen
Continental Benefits
Luis and Connie D'Acosta
Dave Christy State Farm Insurance
Design Effects Interiors/Joanne Anderson
Donald and Joye Dillman
Jean Druffel
Kenneth and Sandra Duft
Engage/INHS
Christopher and Anna Engle
Steve and Meridee Febus

Jeff and Angie Feuerstein
Jerry and Donna Finch
Donna Freer-Stannard
Wallis and Sue Friel
William Gonnello
Jennifer Gordon
Susan Gormsen
Walter and Tricia Grantham
Walter and Orbie Gray
Dr. Steve and Sharon Hall
David Dolezilek and Karyn Hardy
John and Lisa Hart
Joe and Sharon Hindman
Jeanne Holstad
Larry Hood

Fritz and Mary Margaret Hughes
Inland Cellular
Inland Northwest Blood Center
Inland Northwest Broadcasting/KRPL Inc.
J & H, Inc.
Glenn and Kathryn Johnson
Becky Kerben
Howard and Marvel Kimball
Karen Kinzer
Dave and Patti Knowles
Brad and Jennifer Lewis
Norman Lewis

—Continued on page 14

—Continued from page 13

Keith and Bonnie Jo Lincoln
Thomas and Claudia Mays
Elinor McCloskey
Noel and Nick Nicolai
Thurman Oliver
Presnell Gage, PLLC, Pullman
Rethink Health
Sam Dial Jewelers
Sanctuary Yoga, LLC
Barney and Marcia Saneholtz
David Seamans
James Short, PhD
Dr. Govind and Amy Singh
Josh and Jamie Smart
Janice Stewart
Dr. Marcus and Mary Torrey
Kaela Trump
Waddell & Reed
Waddell & Reed, Pullman
Michael and Julie Waite
Carleton and Rosemary Waldrop
Washington Trust Bank
WellDyne Rx
Jackie Sue Wilkins
Ray and Pat Wright
WSU Athletics
Ralph and Valerie Yount
Russell and Elaine Zakarison

\$999–\$500
D. Scott and Janet Adams
Jack and Marilyn Alexander
Aon Corporation
Lee and Maxine Bamesberger
Craig and Karlene Beaumont
Jack and Molly Bencoter
Gary and Karen Bloomfield
Busch Distributors, Inc.
Cindy Carver
Kenneth and Dorothy Casavant
Holly Chetwood
Sam Dial
Scott and Debi Dockins
Bill and Joy Drake
Bill Druffel and Katie Evermann Druffel
Mary Druffel
Crista Emerson
Mark Feltis
Lola Finch
Rick and Kristin Finch
Foster Pepper, PLLC

Jack and Linda Fulfs
Gannon-Goldsworthy Hall
Dr. Dennis and Regina Garcia
Jeff and Linda Greene
Randy Hartig
Linda Hastings
Ray Hillman
Mike and Sue Hinz
Paul and Dorcas Hirzel
Roxanne Hodges
Robert and Ruth Holmes
Andrew and Andrea Howell
Inland Imaging Associates
Irwin, Myklebust, Savage & Brown, PS
Jan and Connie Koal
Liz Lee
Susan Markey
Don and Marianna Matteson
William Maynard
Margaret McGreevy
McGregor Company
Archie McGregor
Keith McIvor
Jeff McWhirter
Dr. Peter Mikkelsen and Anna Lim Mikkelsen
Ron and Judy Moser
Northwestern Mutual Financial/Mike Waite
Charles and Gwen Oldenburg
Scott and Shauna Patrick
Tim and Carin Pavish
Joe and Tami Pitzer
Dave and Kristin Prieur
Pullman Family Medicine
Linda Rauch
Jerry Roberts
Rod and Kelly Sebold
Michael and Diane Smerdon
Michael and Patricia Sturko
Michael and Winifred Ann Tate
Judy Templeton
Valic
Robert and Karne Warner
Washington Trust Bank Wealth Management and Advisory Services
Wills and Associates, PLLC
Marcia Nygaard

\$499–\$1
Taylor Abell
Robert and Lillian Ackerman

Deb Adair
Taylor Adams
Dr. Benjamin and Jodi Adkins
Advantage Storage
Stacey Aggabao
Agpro Marketing and Manufacturing, Inc.
Aitken, Schauble, Patrick, Neill, & Schauble Law Firm
J. Richard Alldredge
Debra Allen
Thom and Kris Allen
Renee Allert
Almota Elevator Co.
Joanne Anderson
Jon and Rosalie Anderson
Eileen Ankerson
Steven and Cindy Armstrong
Chris and Tracy Arvas
Susan Atteberry
Bridget Bailey
Dan Eveleth and Lori Baker-Eveleth
Bryan Baldwin
Donald and Barbie Barton
Midge Bashaw
Betty Becker
Robert Becker
Blain Beehler
Cheryl Beeksm
Gary and Janis Behymer
Frances and Heidi Benjamin
Gary Benson
Jim and Betty Benson
Kenneth and Elaine Benveniste
William Bierbaum
Ferdie Biscocho
Frank and Betty Anne Blain
Nicole Blaker
Dean Bloomfield
Brittney Bodine
Karl and MaryAnn Boehmke
Virginia Boettcher
Susan Bohm
Mike and Dede Boone
Dineo Boyd
Jean Boyd
Clarissa Boyer-Engen
Pam Bradetich
Carolyn Bradford
Janet Brandt
Dale and Beverly Brantner
Alberta Brassfield
Marlene Bredfield
Ellen Brewer
Brian's Body Shop

Katie Brinton
Edward and Paula Broemmeling
Constance Brown
Kelly and Kathleen Brown
Jack Broyles Jr.
Anke and Dieter Burger
Donna and Stephen Busch
Douglas Call and Nina Woodford
Melissa Camp
Keith Campbell
Joe and Helen Campero
Dr. Brad and Debbie Capawana
Pat and Laurie Caraher
Jack and Vicki Carney
Ken Carper
Josh and Cindy Carver
Linda Chulich
Caitlin Champoux
Kevin Chang
Vishal Chaudhry
Janice Chenette
Francis Cheung
Cindy Chittenden
Dolma Christenson
Catherine Clark
Kenby and Lana Clawson
Clearwater Canyon Cellars
Stephanie Cochrane
Stanley and Marge Coe
Coffey Communications, Inc.
Coldwell Banker Tomlinson
Mary Cole
Bonnie Collins
Columbia Grain, Inc.
John Cooper
Charles Cope
Lisa Cordodor
Michael and Angela Corwin
Douglas Cox
Clarice Coyne
Rendy Criddle
Crites Seed, Inc.
Steve Cromer
Deborah Crooks
Jackson A. Crump
Sharon Curtis
Alex Le Noble
James and Marilyn Dahmen
Roger and Jacqueline Daisley
Dawn Daniels
Mary Lillian Davis
Rex and Alice Davis
Danielle Davis-Sandler
David and Jennifer Dean



Pullman Regional Hospital Surgical Services

Delta Dental of Washington
Kim Demeerleer
Denny Christenson & Associates
Kimberly Devich
Terry DiGaetano
Dingus, Zarecor & Associates
Heather Dixon
Nancy Downs
Melvin and Judy Drake
Phil Druffel
Chloe Dugger
Michael Dugger
RaeAnn Dugger
Steve Dunning
Sue Durrant
Ken Dzuck
Maureen and Dennis Edgcombe
Michelle Ellingsen
Jeremy Ellison
Kathy Emtman
Ray Ertle
Katie Eylar
Susan Fagan
Pamela Farmer
Patrick Ferguson
Sandra Field
Katherine Finch
Marcy Fisher
Jack and Susan Flack
McKenzie Forester
Dr. Stephanie Fosback
Albert and Joan Frakes
Melissa Francik
Dr. Richard and Sally Fredericks
Lacey Frei
Rebecca Freimark
Tim and Sandy Frisbey
Larry Fry
Dick and Marilyn Fry
Andrea Gallagher
Wayne and Gayle Gallagher
Charles and Gail Gearhiser
Halea Geheb
Shirley and Robert Giden

Judy Giseburt
Jack Glass
Kelly Goertzen
Jeffrey Goesling
Cheryl Gostin
Rebecca Gostin
Robin Gostin
Adam Grad
Kim Graf
Tyne Gray
JoAnne Greear
Joy Green
Sally Greene
Gloria Gregory
Shelby Gregory
Kathleen Groseclose
Audrey Guettinger
Dennis and Dorri Guettinger
Jeff Kimberling and Megan Guido
Carl and Charlene Gustafson
Robert and Donna Hanson
Merle Harlow
Jerry and Rosalie Harms
Harris Electric
Gerald Hartman
Karren Hash
Dennis Hatley
Rebecca Hatley
Peter and Jolie Haug
Sheri Healey
Erin K. Heath
Bruce and Laurelee Heimbigner
Jerry and Holly Hein
Marie Heisler
Tom and Jennie Heitstuman
Anna Henderson
Joan Hendrickson
Jill Herbold
Carleton and Judith Herdering
Mark and Fran Hermanson
Rebekah Herndon
Wendell and Thursa Herrett
Lonna Limburg Heuett
Claire Hickel

Cheryl Hill	Andrew Knecht	Donna McMackin	William Pan	Esther Sanders	Careese Thompson
Devin Hill	Stephanie Knewbow	Dawn Meadows	Louis and Louise Pappas	David Savage	Marvin and Dawn Thompson
Herbert and Jannette Hill	Kolde Properties	Reed and Leslie Melby	Holli Parrish	Ben Schacher	Scott and Miranda Thompson
Charles and Sue Hilliard	Janet Kramer	Barry and Heidi Melin	Gary and Anita Parrott	Helen Scheibe	Kady Tinsley-Hinman
Elizabeth Hillman	Rhonda Kromm	James and Dr. Rita Mellema	Richard Partain	Randy and Cindy Schlee	Wayne and Diana Tippet
Douglas and Judith Hobart	Dave Kronmeyer	Martin and Susan Mendiola	Megan Patnode	Jessica Schmitt	David Tobin
Heidi Hoglund	Lynn and Doug Krueger	Henry and Colleen Merrill	Pat Patnode	Robert Scholes	Theresa Torseth
Jesse Holcomb	Tony and Linda Lam	Anthony and Kristi Meyer	Bill and Rachel Paul	Michelle Schomer	Cathy Tucker
Mary Nell Holden	Ashley Lambert	Colin Meyer	Robert and Claudia Peavy	Arthur and Susan Schultheis	Al and Coralee Tucker
Marian Hood	Mark S. Lang	John and Barbara Meyer	Dr. Steven and Rachel Pennington	Carroll and Edna Mae Schultheis	Allyssa Turcotte
Brent Hoogner	David and Melanie Lange	Kristine Meyer	Sara Jane Perino	Harold and Anne Schultheis	Darrell Turner
Cynthia Hosick	Jennifer Lanier	Chuck Morrow	Sarah Peterson	Jeremiah Schwab	William and Sandra Turner
HRC Wealth Management, LLC	Casey Laprade	Zach Myers	Pickard Orthodontics	Peady Schwabe	Kenna Uddenberg
Hub International Insurance	John and Nancy Larsen	Bill Michaelson	Sid and Penne Pierson	Rod and Paula Schwartz	Union Flat Community Club
Tess Hudson	Greg Larson	Erin Miller	Guy and Arlyce Pitzer	Rich and Donna Scott	Wynn and Gloria Van Ausde
Joe and Patricia Hulett	Stephanie Larson	Reid and Nancy Miller	Caitlyn Placek	Jess and Rene Scourey	Kendyl Van Hout
Richard and Ann Hume	Fran and Richard Law	Thomas Miller	Erick Pong	Martha Senger	Jansen VanderMeulen
John Hunt	Connie Leaf	Kelly Ben Miloud	Darin and Jana Porter	Dorothy Sharp	Hal and Rebecca Vandevord
Gary and Beverly Hyde	Charles and Nancy Leathers	Jacob Montano	Nick Prante	Caroline Siewert	VMRD, Inc.
Idaho Truck Sales Co., Inc.	Jerry and Carrie Lee	Jessica and Nathan Moore	Jane Preece	Barbara Simpson	Ann Vogrig
Claudia and Mike Iles	Michael and Joy Leiterman	Bill and Kendra Moos	Presnell Gage, PLLC, Lewiston	Gary Singleman	Joe Vogrig
Sabrina Imler	Taylor Liebig	Kira Morrison	Frances Preston	Bill and Susie Skavdahl	Brad Vonhof
Fred and Lianne Inaba	Darcy Linderman	Moscow & Pullman Building Supply	Prune Orchard	Jason Skiles	Charlie Vulliet
Birgitta Ingemanson	Roland and Frances Line	Judy Moser	Pullman McDonald's	Lloyd and Donna Slusser	Lois Waldman
Diane Ingham	Daniel and Julia Little	Barbara Mullally	Latifa Qayoum	Katherine Smart	Alice Walker
Neil Ivory	Jaclyn Summer Logsdon	Mark Munson	Diane and Michael Quann	Pat and Annette Smith	Ian Wallace
Maureen Jackson	Lyle Lowder	Dr. Michael and Catherine Murphy	Garrett Quarve	Julian Smith	Dyllan Walton
Scott and Mary Jo Jacobs	Sarah Lowenthal	Suma Murthy	Don Quist	Angela Snarski	Kaitlin Watson
Afton Jacobson	Consortia Lumasag	Peggy Myers	Matt Ramsey	Riley Sorensen	Tarrin Weber
Nathan James	Laurie Lund-Gonzalez	Sue Myers	Terry Reems	Kevin Southwick	Harry and Sharon Wells
Jacie and Wayne Jensen	Dale and Irene Lunsford	Virginia Myers	Wallace and Margaret Rehberg	Savannah Spaulding	Carmen Welter
Barbara Johnson	Kym Lunsford	Debbie Nakata	Tim and Betty Rehnberg	Dr. David and Kathy Spencer	Tina and Daniel Welter
Bart Johnson	Joe Lynd	Herbert and Barbara Nakata	Anna Reid	L. Joe and Sandra Spoonemore	Michael and Vivian Werner
Jennifer Johnson	Dale and Cathy Lyon	Kirsten Neelon	Frank and Roxanna Reisenauer	Ashley Stadelman	Richard and Carla Wesson
John and Lisa Johnson	Roger A. Lyons	Dr. John and Lee Neff	Kerry Reno	Dr. Michael and Phyllis Stallcop	Chloe Westgate
Neil and Lila Johnson	Randy Maag	Howard and Mary Jane Neill	Janet Repp	Bill Stanwood	Donald and Melissa White
Paula Johnson	Stephanie Macculloch	Sharon Nitz	Rick and Jenny Repp	William Stevens	Fredric and Susan White
Mariah Johnston	Patricia Magaret	Dave and Marian Nordquist	Michelle Reynolds	Katie Stodick	Whitman County Fire
Carol Jorstad	Mary Maggio	Shirley Normington	Kayleigh Richards	Ray and JoAnn Story	Jon and Carol Whitman
Sarah Kangas-Hanes	Kirk Magill	John and Kelly O'Bryan	Shirley Riebold	Miriam Stratton	Nancy Willard
Virginia Keefer	Janine Maines	Debbie O'Connor	Sandra Riedinger	Linda Strong	Guy and Cindy Williams
Richard S. Kehrer	Adam Malcolm	Stuart Olason	Jacqueline Riley	Lauren Summers	Susan Williams
Issac Kelly	George Malcom	Jim Olson	Jill and Vincent Rinaldi	John and Cheryl Swain	Tim Williams
Laura Keogh	Rebecca Mallo	Judy Olson	Charles and Barbara Robbins	Josephine Swanson	James and Joyce Wills
Kayla Keppler	Neil and Iris Manning	Leslie Olson	Sarah Robbins	Lisa Swanson	Robert and Diane Wilson
Rhonell Kercheval	Bonnie Martin	Omega of Theta Xi Association	Niki Roberts	Tom Swanson	Edward and Brenda Wolf
James and Gladys Kerns	Nancy Martin	James Onstad	Ed and Ferris Robertson	Kiall and Stacey Swift	Charlotte Worthly
Sayad Khan	Phyllis Martin	Janice Organ	Jack and Belle Rogers	Tessa Swift	Katherine Wride
KHQ, Inc.	Randy Martin	Donald and Patricia Orlich	Krystal Rogers	Mary and Buck Taggart	Carolyn Wyatt
Paul and Connie Kimmell	JoAnn Maurin	Carol Owings	Anna Rubalkava	Zachary Taylor	Tristen Yong
Jim and Phyllis Kincaid	Bob and Adrienne Maxwell	Katherine Packwood	Korby Rudd	Joanne and Douglas Tebow	Patricia Young
Douglas and Terese King	Jessica May	Bruce and Barbara Palmer	Eric and Linda Sagen	Jasmine Telford	Mark and Kaye Yrazabal
Cheryl Kinkel	Randall May	Palouse Knowledge Corridor Corporation	Lynn Sakamoto	Yara Tethys	Gary and Sharon Zentzis
Anya Kinyanjui	Megan McCoy		Diane Sampson	Lara Theobald	Evelyn Zimmer
Jeff and Lynette Kinzer	McDonald's of Pullman		Jason and Kari Sampson	Kari Thierer	
William and Juanita Kinzer	Norm Apperson and Pamela McEachern		Laurie Sams		
Leonard Kirschner and Frances Petrella	Karla McGee		PJ Sanchez		
Matt Kleffner	Abigael McGuire				
	Marian McIntosh				

Pathways to a Healthy Future

PATHWAYS is published as a community service for the friends and patrons of Pullman Regional Hospital, 835 SE Bishop Blvd., Pullman, WA 99163, 509-332-2541, www.pullmanregional.org.

Scott Adams
Chief Executive Officer

Rueben Mayes
Chief Development Officer

Jeannie Eylar
Chief Clinical Officer

Megan Guido
Chief Marketing & Community
Relations Officer

Information in PATHWAYS comes from Pullman Regional Hospital. If you have any concerns or questions about specific content that may affect your health, please contact your healthcare provider.

Models may be used in photos and illustrations.

Copyright © 2016 Coffey Communications, Inc. All rights reserved.



PULLMAN REGIONAL HOSPITAL
835 SE Bishop Blvd.
Pullman, WA 99163

Standard
U.S. Postage
PAID
Walla Walla, WA
Permit No. 44



Why the Wuestney family gives back

Now in his 29th year with the Pullman Regional Hospital Maintenance Department, Pat Wuestney previously worked for Northwestern Mutual Life. So, it may come as no surprise that he approached the hospital's Foundation in 2014 with the idea of offering a voluntary payroll deduction for hospital employees to support the Endowment for Quality & Access through the Planned Giving program.

"A planned gift, like life insurance, is such an easy way for a small amount of money to make a big difference over time," says Pat.

Pat and his wife, Karen, who works at Washington State University, have been loyal hospital donors since long before the new building on Bishop Boulevard was constructed in 2004. "I remember when the construction bond passed in 2001; I immediately signed up for payroll deduction to

support the hospital," says Pat.

The Wuestney family lives in the country west of Colfax and raised four boys. Pat and Karen have made their fair share of family visits to the Pullman Regional Emergency Department. "It's so nice to know the people who are caring for your children," says Karen.

"We employ board-certified emergency doctors; they are there 24 hours a day. You don't find a commitment to providing specialized care round-the-clock in most rural hospitals," says Pat.

"It's a logical decision to give back to a place which helps us so much," says Karen.

"Pullman Hospital is an outstanding place to work and an outstanding place to receive care. Our financial contribution through our planned gift is our family's legacy with Pullman Regional Hospital," says Pat.

THE PULLMAN REGIONAL HOSPITAL LEGACY SOCIETY honors individuals who make long-term charitable commitments to Pullman Regional Hospital Foundation through planned gifts. Your contribution as a Legacy Society member creates a legacy that will enrich the entire community.

- Scott and Sharon Adams
- Stacey Aggabao
- Spencer and Rae Alisch
- Dr. Richard Caggiano and Karen Karpman
- Suzan Carter
- Laura L. Child
- Carol Chipman
- Dave and Denise Christy
- Charles and Carrie Coen
- Jeff and Jill Elbracht
- Jerry and Sue Foster
- Dr. Kenneth Gibson
- Carol Gordon
- Merle Harlow
- Ed and Toni Harrich
- Michael and Becky Highfill
- CS (Jack) and BettyJo Hilliard
- Fred Lange
- Lauré Larsen
- James and Marji Neill
- Eric J. Olson
- Bruce and Barbara Palmer
- Joe and Tamira Pitzer
- Jan Pyle
- Michael and Carol Rydbom
- Joshua and Jamie Smart
- John and Patricia Snyder
- Mike and Christine Sodorff
- Jesse and Alison Weigley
- Patrick and Karen Wuestney