

# PULLMAN REGIONAL

## PATIENT CARE EXPANSION CAMPAIGN

Less Wait, Less Travel, More Access to Premier Healthcare



## MISSION

Pullman Regional Hospital exists to nurture and facilitate a healthier quality of life for our region.

Since first opening its doors on Bishop Boulevard in 2004, Pullman Regional Hospital has expanded its healthcare services to accommodate for a growing community, advanced technologies, and evolving trends.

### In the past 20 years:

- Emergency visits have more than doubled
- Surgical cases have increased by 35%
- 12 clinics have been added, including primary care, general surgery, cardiology, and urology



Expanding is absolutely necessary, and this plan will allow us to provide better access, reduce wait times, and limit traveling for specialized healthcare. Thank you, Pullman, for believing in us so we can keep caring for you.



**Matt Forge**  
Pullman Regional Hospital CEO

- The Family Medicine Residency Program, in partnership with the WSU Elson S. Floyd College of Medicine, was established to train and educate resident physicians who have an interest in practicing rural healthcare.

As our community grows, so does our need for healthcare access.

The Patient Care Expansion Project emphasizes the patient experience and efficiencies while aligning for a shift in trends from inpatient to outpatient care. The expansion project includes a same-day universal room concept allowing for greater flexibility in emergency care, post-procedural recoveries, and observation, and enables Pullman Regional to increase its outpatient care capacity while maintaining its maximum number of inpatient beds (25) as a critical access hospital.



## The Patient Care Expansion Project will:



Increase dedicated space for the care of mental health patients to accommodate for holds and observation



Increase surgical capacity with more room to utilize state-of-the-art technologies



Reduce wait times for surgery



Provide a patient-focused experience for more complex and time-intensive surgeries



Create pathways to recruit and retain surgical specialists who are passionate about practicing rural medicine

## PHASE 1

- New construction to expand the Emergency Department
- Surgery expansion of the post-anesthesia care unit and addition of a surgical suite
- Birth Place security and technology upgrades
- Renovation of care team stations in the Medical/Surgical unit and relocation of services in preparation for Phase 2

“ I want my friends, family and neighbors to have access to **high quality medical care.** ”

**Katie Van Wyngarden**  
Member, Planned Giving Advisory Council  
Community Member

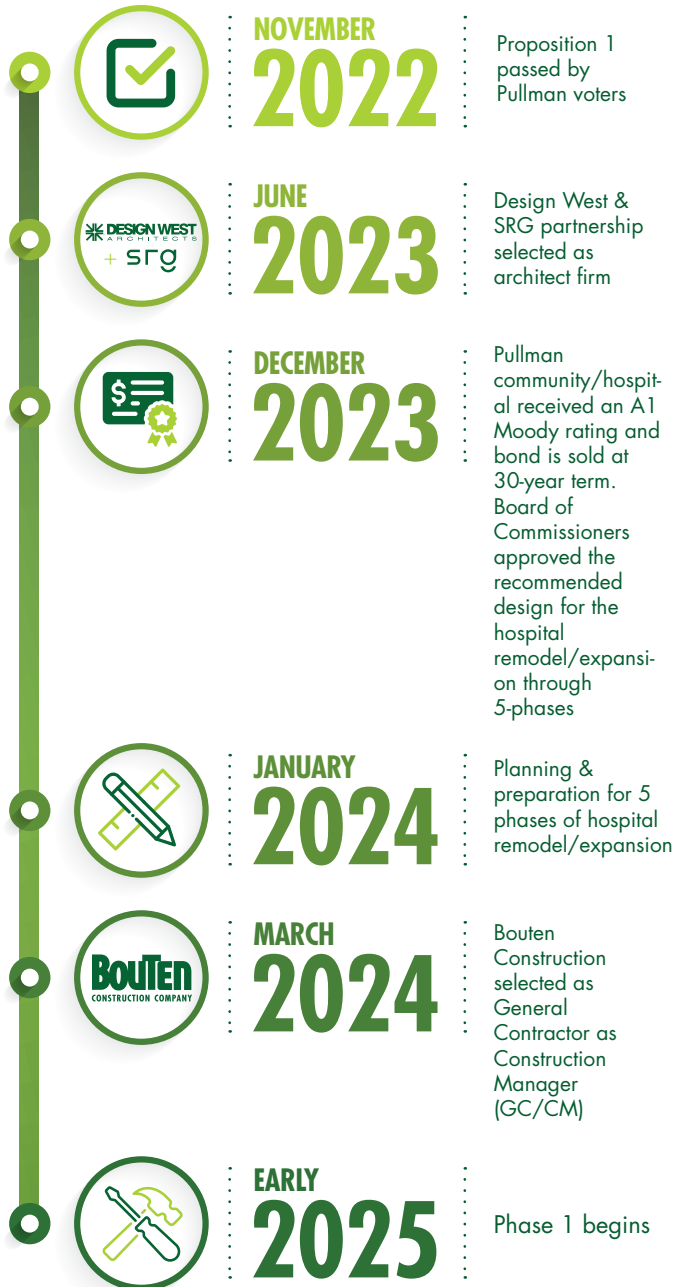
**We care about our community. We care about your health. We care about you!**

To minimize the disruption of a fully functioning hospital, the Patient Care Expansion Project will occur in 5 phases while concurrently planning for a medical office building.



# TIMELINE

*Delivering on the commitments made to our patients and community*



**“ An investment in the expansion project to create efficient use of space, especially during peak times and surges, will positively change how we care for patients – particularly in the areas of behavioral health and trauma. ”**

**Dr. Pete Mikkelsen**  
Chief Medical Officer and Medical Director  
Emergency Services

Philanthropy enables Pullman Regional Hospital to be proactive and visionary in addressing the current and future medical needs on the Palouse. Increased capacity will deliver premier healthcare to families and friends when they need it, and bring specialty services to our region that were not available in the past.

**Our philanthropic goal for the Patient Care Expansion Campaign is to raise \$7.5 million.**

The Pullman Regional Hospital Foundation's Campaign Committee is made up of dedicated volunteers who work closely with the foundation team to provide guidance and counsel on campaign goals, and serve as passionate advocates who help tell the story and open new doors of philanthropic possibilities!



## Campaign Leadership Volunteers



**Pete Chittenden**  
COO, DABCO Property  
Management



**Wayne Druffel**  
Farmer and Business  
Owner, Zeppoz



**Dr. Pete Mikkelsen**  
Chief Medical Officer, Pullman  
Regional Hospital



**Karin Nevenschwander**  
Sr. Director, Foundation  
Relations, Washington State  
University Foundation (retired)



**Patricia Wright**  
Council member, City of  
Pullman

## Pullman Regional Hospital Foundation Staff



**Becky Highfill**  
Grants Manager and  
Director of the Center for  
Learning and Innovation



**Linda Infranco**  
CFRE, Executive Director,  
Pullman Regional Hospital  
Foundation



**Stephanie Pierce**  
Director of Development



**Derek Sedam**  
Director of Operations

## About Pullman Regional Hospital

Located in Pullman, Washington in the heart of the Palouse, Pullman Regional is an award-winning critical access hospital that provides an array of innovative treatment and prevention services benefitting patients in comprehensive and visionary ways.

### FOR MORE INFORMATION

✉ **PULLMAN REGIONAL HOSPITAL  
FOUNDATION**  
840 SE Bishop Blvd. Suite 200  
Pullman, WA 99163

💻 **prhfoundation@  
pullmanregional.org**

📞 **(509) 332-2043**

**Thank you for INVESTING in Pullman Regional Hospital**