

Construction Progress Report: May 1, 2026

Project Overview

In April work continued to progress in multiple Phase 1 locations including the Generator Room, Canola, Lewiston, and Palouse – including microphase B1 (MSU Nurses Station).

At Lewiston, the exterior wall assembly received weather barrier and curtain wall glazing assemblies with glass on order.

Interior finishes are in progress, with all active areas having drywall finish and paint applied, with grid ceilings and overhead inspections taking place going into May.

The first areas finalized for turnover in microphase B1 will allow for the bowling alley adjustment into the OR corridor as part of B2 to start in May.

Submittal & RFI Log

Submittals being tracked: 475
 Submittals in for review: 5
 Submittals processed: 415
 RFIs in for review: 12
 RFIs progressed: 105

Schedule Update

Data date: 04/28/2026
Percent complete per overall schedule: 22%
Percent complete per overall task: 36%
Schedule variance in days: 0 working days – Substantial Completion December 23, 2027

Summary Report for Progress Schedule:

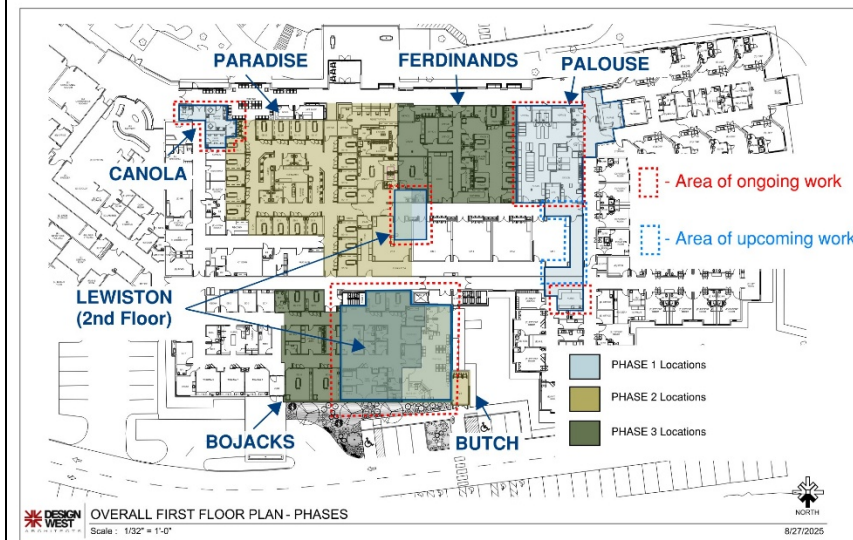
Exterior Assembly: WRB, Flashing, and 2nd Floor Curtain Wall framing was completed, glazing has been field measured and is scheduled for delivery in coming weeks. Fireproofing assembly at slab edge approved to allow walls to be enclosed for interior finishes.

Palouse – Future Central Sterile and Corridor revisions. Microphase B1 (MSU Nurses Station) flooring and casework installed with Pullman Building and Fire Department approval for occupancy anticipated May 7th. Main work area epoxy flooring installation underway, limiting access to the space until completed, overhead rough in finals to follow.

Lewiston – Future Lab Space and IT Closet. Flooring and Casework installation are ongoing. Gypsum returns at Curtainwalls allow for ceiling grid and flooring to abut final conditions. In the support Mechanical and IT Closet, AHU 8 installed to support work in Phase 2 and Low Voltage cabling is being pulled to allow for transfer of services prior to demolition of an existing first floor location.

Canola – Future Phlebotomy & Imagine Support – Walls were framed, hung, and painted in April with ceiling grid installation ongoing to allow for flooring in early May.

Area Map



Project Spotlights

Curtainwall framing installed – top portion with splice for future scope.

Epoxy flooring installation ongoing in Palouse.

Casework and sheet vinyl flooring installations throughout Phase 1.

Progress Photos



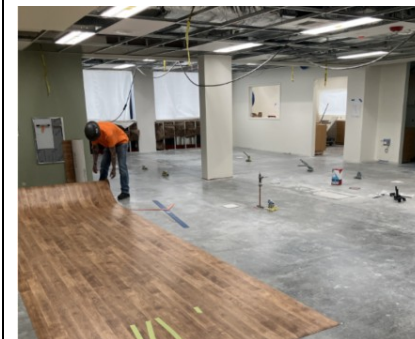
Lewiston – WRB & Flashing



Lewiston – Window Returns



Palouse – B1 MSU Nurse Station



Lewiston – Flooring Install



Palouse – Overhead Rough In



Lewiston – AHU 8 Louver Opening



Lewiston – Curtain Wall Frames



Lewiston – RODI Skid



Lewiston – Slab Edge Fire Proofing

Upcoming Activities

- Exterior skin finish assembly – stucco and glazing for water testing.
- Coordination with equipment start-ups and pre-functional testing with TestComm Commissioning agents for Lewiston to start May 11th.
- B2 & A5 Microphases for surgery corridors.

Permits & Inspection Status

- Fireproofing Inspections ongoing.
- Overhead rough-in ongoing for ceiling tiles drop at Palouse and Lewiston.
- TCO readiness walk through with Pullman Building and Fire at B1 MSU nurses' station.
- Egress plan review for A1 Birthing center ongoing.