



# Patient Care Expansion Update

September 2025

# Patient Care Expansion Project

- Impact
- Timeline
- New Design



PULLMAN  
REGIONAL  
HOSPITAL

# Project Impact

*Less wait, less travel, more access to exceptional healthcare*

- Expanded emergency services
  - increasing the footprint of our emergency department
  - designating safe/specialized space for mental health
- Expanded surgical services
  - adding a 5<sup>th</sup> operating room & 2 endoscopy suites
  - Increasing size of post-operative recovery room to accommodate growth
- Better patient experience for outpatient services
  - remodeled space so patients “move” less (reduces wait and risk) with larger rooms

# Project Scope



- **4 Phases:**

- 1 -3: Hospital
- Phase 4: New medical office building behind the hospital

- **Timeline:**

- Phase 1 Start: Fall (November) 2025
- Phase 2 Start: Summer 2026
- Phase 3 Start: Spring 2027
- Phases 1-3 complete: Early 2028
- Overall 8-month reduction from initial estimate
- Phase 4: TBD (potentially concurrent with phases 1 -3)

# Project Details



- **Procedure** : (5) ORs, (2) Endoscopy Rooms, New enlarged central sterile, New enlarged break and locker rooms
- **Outpatient Prep & Recovery** : (7) PACU beds, (20) enlarged prep/recovery rooms consolidated into a single location, (2) new enlarged nurse care stations
- **Emergency Department** : (15) ED Beds (including (2) new trauma/resuscitation rooms), (3) Behavioral Health rooms, additional nurses' station, new enlarged ED registration & waiting area
- **Registration** : new centralized check-in 'one-stop' location for outpatients and inpatients
- **Birthplace** : renovated nurse care station and security upgrades
- **Medical -Surgical Unit** : renovated nurse care station
- **Lab** : relocated enlarged Lab, Microbiology Lab, and Blood Bank, new blood -draw outpatient service location on main floor for patient
- **Imaging** : replacement of CT Scanner and Nuclear Medicine Equipment; 2<sup>nd</sup> CT scanner

# Project Progress / Status

Bouten Construction Design Development Pricing 12/20/24

Bouten Construction Updated Pricing 1/10/25

Design Team & Bouten Work Session 1/20/25

Bouten Construction Updated Pricing 2/1/25

Budget/Scope balancing review: July 2025

Leadership & User Group Work Sessions 2/10/25 – 6/6/25

Commissioning Review 5/1/25 – August 2025

**DOH permitting 7/14/25 – 9/1/25: ACCEPTED!**

**Groundbreaking November 2025**

**BOUTEN**  
CONSTRUCTION COMPANY

**MASTER SCHEDULE**  
**8/20/25 BID SET - EXHIBIT A**



Task Name	Task Name	Dur	Start	Finish	%	Responsibility	Half 1, 2025				Half 2, 2025				Half 1, 2026				Half 2, 2026				Half 1, 2027				Half 2, 2027				Half 1, 2028																																																																																																																																																																																																																																																																																																																																																																																																																																																																																																																																																																																																																																																																																																																																																																																																																																																																																																																																																																																																																																																																																																																																																																																																										
J	F	M	A	M	J	J	F	M	A	M	J	J	F	M	A	M	J	J	F	M	A	M	J	J	F	M	A	M	J	J	F	M	A	M	J	J	F	M	A	M	J	J	F	M	A	M	J	J	F	M	A	M	J	J	F	M	A	M	J	J	F	M	A	M	J	J	F	M	A	M	J	J	F	M	A	M	J	J	F	M	A	M	J	J	F	M	A	M	J	J	F	M	A	M	J	J	F	M	A	M	J	J	F	M	A	M	J	J	F	M	A	M	J	J	F	M	A	M	J	J	F	M	A	M	J	J	F	M	A	M	J	J	F	M	A	M	J	J	F	M	A	M	J	J	F	M	A	M	J	J	F	M	A	M	J	J	F	M	A	M	J	J	F	M	A	M	J	J	F	M	A	M	J	J	F	M	A	M	J	J	F	M	A	M	J	J	F	M	A	M	J	J	F	M	A	M	J	J	F	M	A	M	J	J	F	M	A	M	J	J	F	M	A	M	J	J	F	M	A	M	J	J	F	M	A	M	J	J	F	M	A	M	J	J	F	M	A	M	J	J	F	M	A	M	J	J	F	M	A	M	J	J	F	M	A	M	J	J	F	M	A	M	J	J	F	M	A	M	J	J	F	M	A	M	J	J	F	M	A	M	J	J	F	M	A	M	J	J	F	M	A	M	J	J	F	M	A	M	J	J	F	M	A	M	J	J	F	M	A	M	J	J	F	M	A	M	J	J	F	M	A	M	J	J	F	M	A	M	J	J	F	M	A	M	J	J	F	M	A	M	J	J	F	M	A	M	J	J	F	M	A	M	J	J	F	M	A	M	J	J	F	M	A	M	J	J	F	M	A	M	J	J	F	M	A	M	J	J	F	M	A	M	J	J	F	M	A	M	J	J	F	M	A	M	J	J	F	M	A	M	J	J	F	M	A	M	J	J	F	M	A	M	J	J	F	M	A	M	J	J	F	M	A	M	J	J	F	M	A	M	J	J	F	M	A	M	J	J	F	M	A	M	J	J	F	M	A	M	J	J	F	M	A	M	J	J	F	M	A	M	J	J	F	M	A	M	J	J	F	M	A	M	J	J	F	M	A	M	J	J	F	M	A	M	J	J	F	M	A	M	J	J	F	M	A	M	J	J	F	M	A	M	J	J	F	M	A	M	J	J	F	M	A	M	J	J	F	M	A	M	J	J	F	M	A	M	J	J	F	M	A	M	J	J	F	M	A	M	J	J	F	M	A	M	J	J	F	M	A	M	J	J	F	M	A	M	J	J	F	M	A	M	J	J	F	M	A	M	J	J	F	M	A	M	J	J	F	M	A	M	J	J	F	M	A	M	J	J	F	M	A	M	J	J	F	M	A	M	J	J	F	M	A	M	J	J	F	M	A	M	J	J	F	M	A	M	J	J	F	M	A	M	J	J	F	M	A	M	J	J	F	M	A	M	J	J	F	M	A	M	J	J	F	M	A	M	J	J	F	M	A	M	J	J	F	M	A	M	J	J	F	M	A	M	J	J	F	M	A	M	J	J	F	M	A	M	J	J	F	M	A	M	J	J	F	M	A	M	J	J	F	M	A	M	J	J	F	M	A	M	J	J	F	M	A	M	J	J	F	M	A	M	J	J	F	M	A	M	J	J	F	M	A	M	J	J	F	M	A	M	J	J	F	M	A	M	J	J	F	M	A	M	J	J	F	M	A	M	J	J	F	M	A	M	J	J	F	M	A	M	J	J	F	M	A	M	J	J	F	M	A	M	J	J	F	M	A	M	J	J	F	M	A	M	J	J	F	M	A	M	J	J	F	M	A	M	J	J	F	M	A	M	J	J	F	M	A	M	J	J	F	M	A	M	J	J	F	M	A	M	J	J	F	M	A	M	J	J	F	M	A	M	J	J	F	M	A	M	J	J	F	M	A	M	J	J	F	M	A	M	J	J	F	M	A	M	J	J	F	M	A	M	J	J	F	M	A	M	J	J	F	M	A	M	J	J	F	M	A	M	J	J	F	M	A	M	J	J	F	M	A	M	J	J	F	M	A	M	J	J	F	M	A	M	J	J	F	M	A	M	J	J	F	M	A	M	J	J	F	M	A	M	J	J	F	M	A	M	J	J	F	M	A	M	J	J	F	M	A	M	J	J	F	M	A	M	J	J	F	M	A	M	J	J	F	M	A	M	J	J	F	M	A	M	J	J	F	M	A	M	J	J	F	M	A	M	J	J	F	M	A	M	J	J	F	M	A	M	J	J	F	M	A	M	J	J	F	M	A	M	J	J	F	M	A	M	J	J	F	M	A	M	J	J	F	M	A	M	J	J	F	M	A	M	J	J	F	M	A	M	J	J	F	M	A	M	J	J	F	M	A	M	J	J	F	M	A	M	J	J	F	M	A	M	J	J	F	M	A	M	J	J	F	M	A	M	J	J	F	M	A	M	J	J	F	M	A	M	J	J	F	M	A	M	J	J	F	M	A	M	J	J	F	M	A	M	J	J	F	M	A	M	J	J	F	M	A	M	J	J	F	M	A	M	J	J	F	M	A	M	J	J	F	M	A	M	J	J	F	M	A	M	J	J	F	M	A	M	J	J	F	M	A	M	J	J	F	M	A	M	J	J	F	M	A	M	J	J	F	M	A	M	J	J	F	M	A	M	J	J	F	M	A	M	J	J	F	M	A	M	J	J	F	M	A	M	J	J	F	M	A	M	J



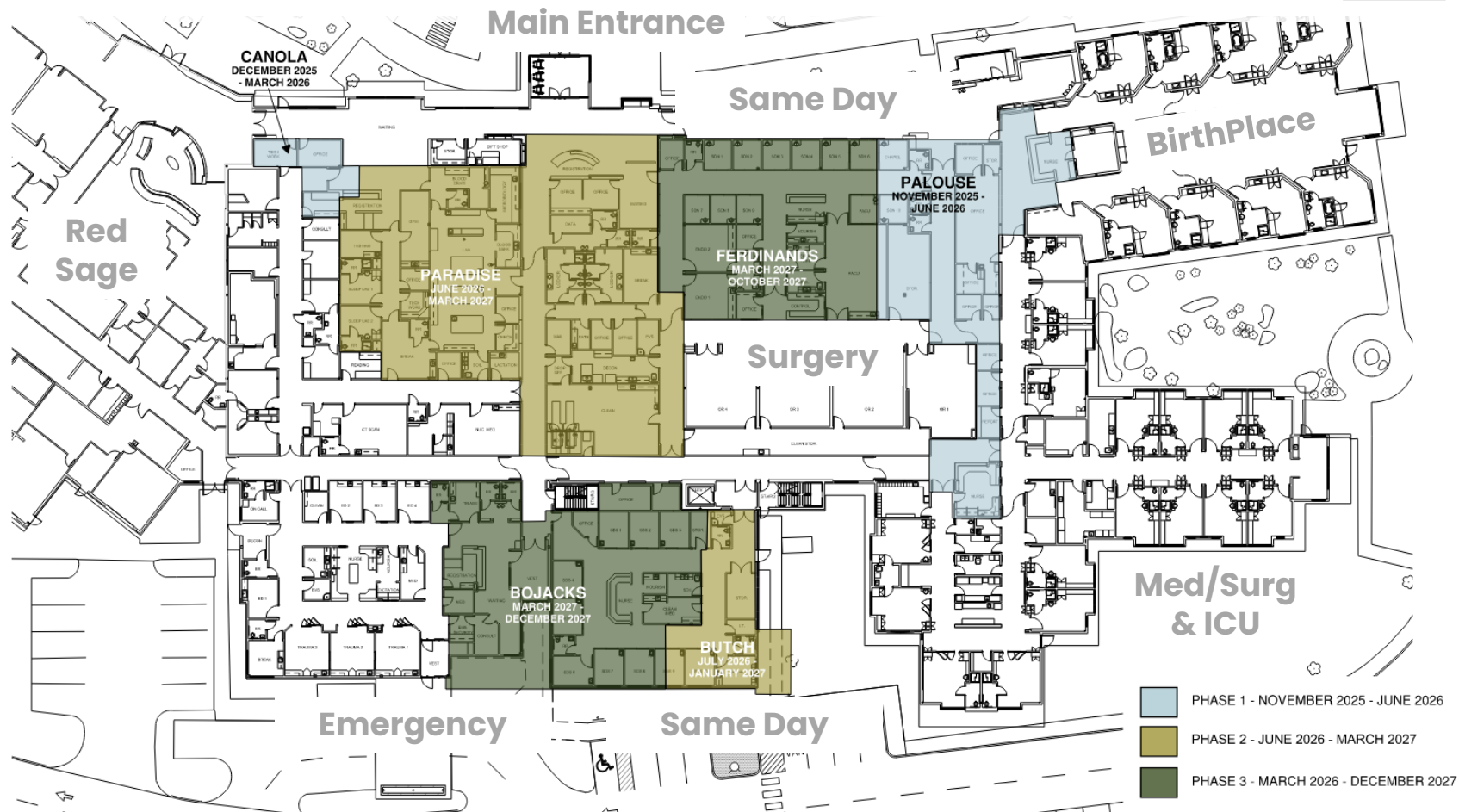
**PULLMAN  
REGIONAL  
HOSPITAL**



# Phasing (current layout) – 1<sup>st</sup> Floor

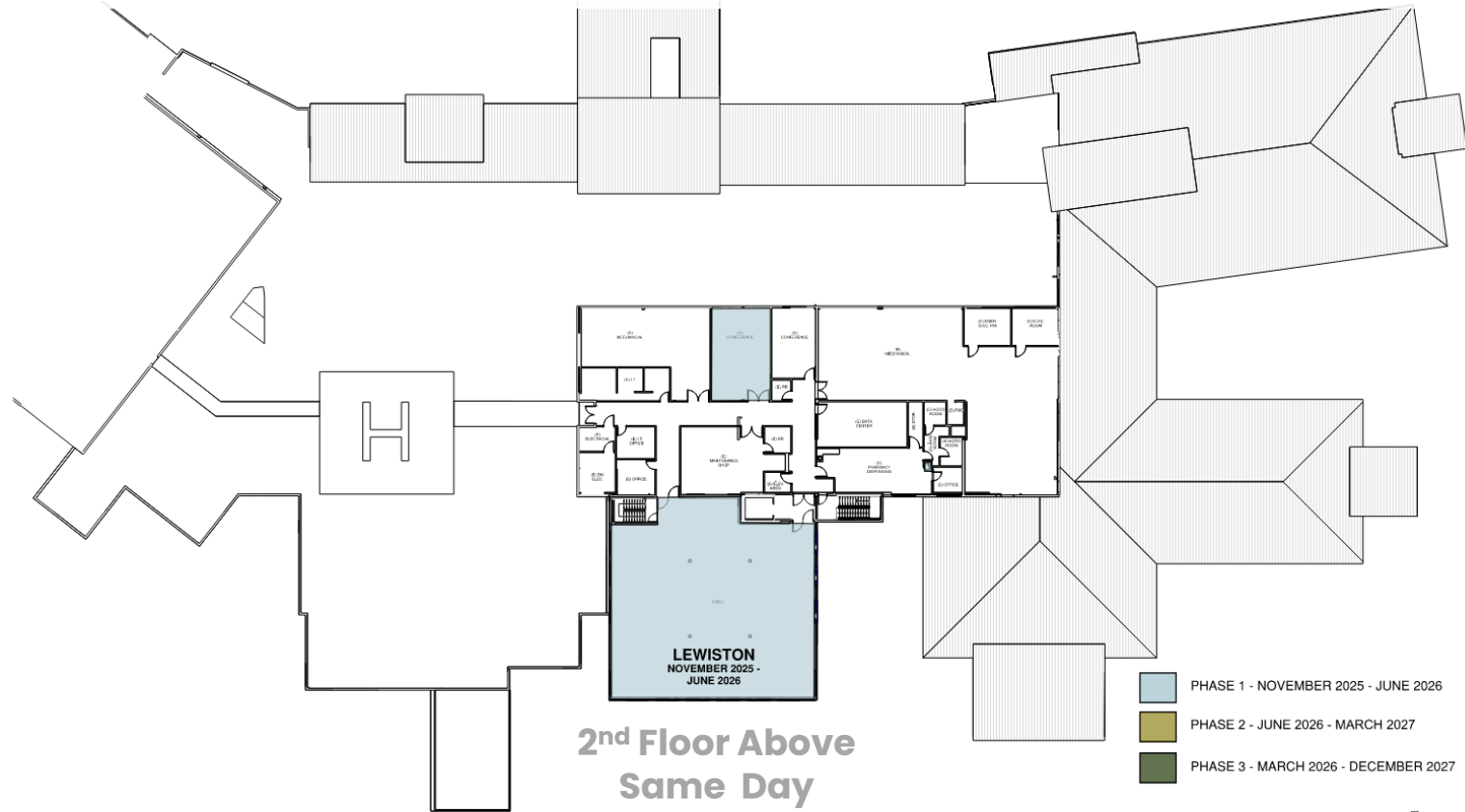


**PULLMAN  
REGIONAL  
HOSPITAL**



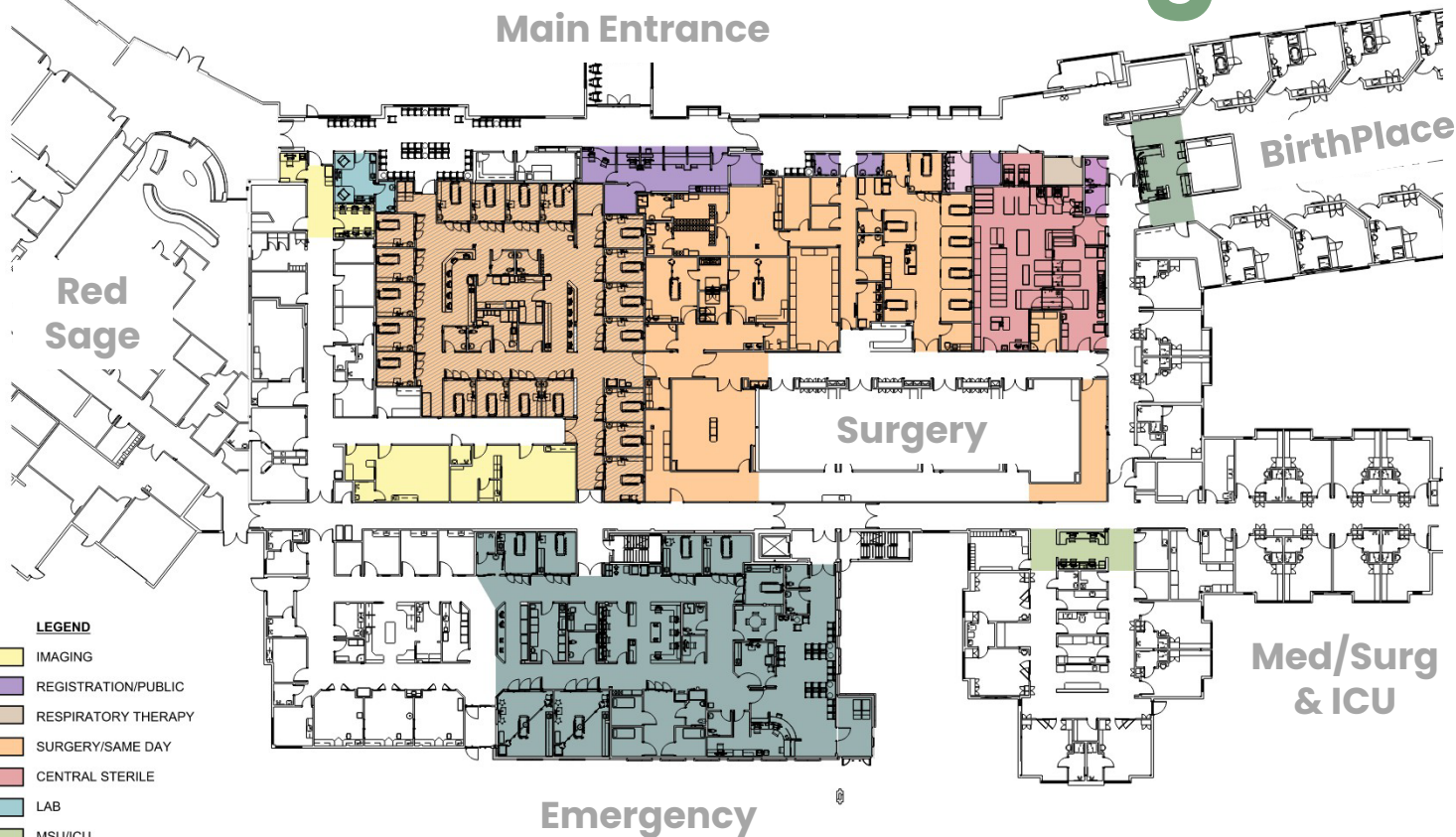


# Phasing (current layout) – 2<sup>nd</sup> Floor



# 1st Floor – New Design

Main Entrance



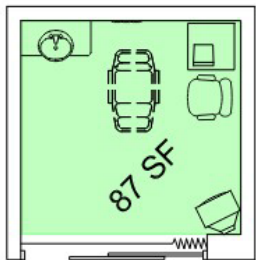
## LEGEND

- IMAGING
- REGISTRATION/PUBLIC
- RESPIRATORY THERAPY
- SURGERY/SAME DAY
- CENTRAL STERILE
- LAB
- MSU/ICU
- BIRTHPLACE
- CARE COORDINATION/NUTRITION
- STAFF SUPPORT

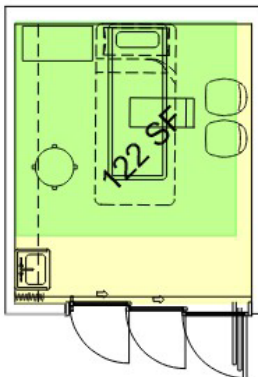
- New Blood Draw Station
- Centralized Registration
- New Chapel
- Centralized Same Day (with larger patient rooms)
- 2<sup>nd</sup> CT Scanner
- 2 Endoscopy Suites
- 5<sup>th</sup> OR
- Larger PACU
- Enhanced BirthPlace Security
- Expanded ER (double patient rooms)

# Room Size Comparisons

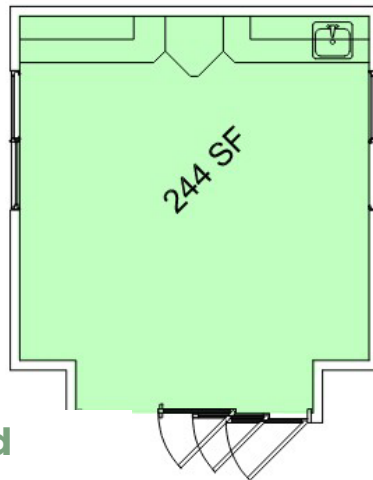
**EXISTING  
PREP/RECOVERY  
ROOM**



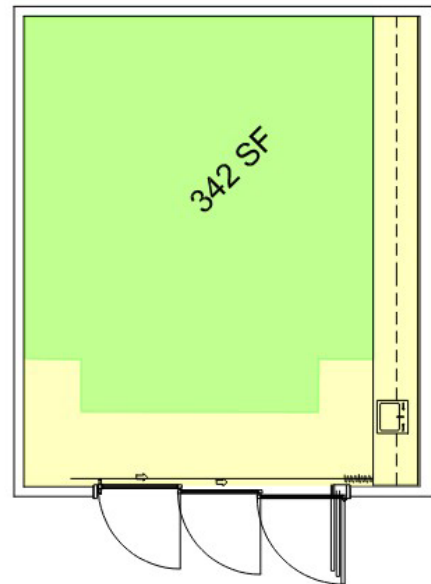
**NEW  
PREP/RECOVERY  
ROOMS**



**EXISTING  
E.D. TRAUMA  
ROOM**



**NEW  
E.D. TRAUMA/IOS  
ROOM**



- 16-20% increase in OR, PACU, Endoscopy and Same Day
- 40% larger Emergency Trauma rooms
- 25% larger waiting area in Emergency Department

# Design Images



*Emergency Department Entry view*

# Design Images



*Emergency Department view from southwest*



# Design Images



*Main Entry – Centralized Check-in & Registration*



# Design Images



*Emergency Department Waiting & Registration*

# Design Images



*Emergency Department Care Station*

# ? FAQs

Are you staying open during construction? – Yes

What about parking?

Are you going to ask for another bond or increase the current one?  
– No!

# Thank you!

## Questions?



PULLMAN  
REGIONAL  
HOSPITAL