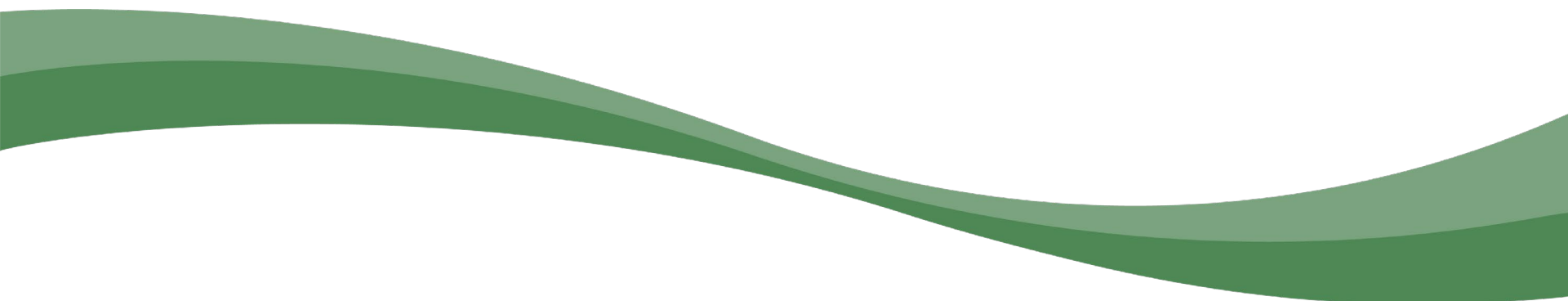




Expansion Project Status Update

June 2025



Project Progress / Status

Bouten Construction Design Development Pricing 12/20/24

Design West revision options

Bouten Construction Updated Pricing 1/10/25

Design Team & Bouten Work Session 1/20/25

Bouten Construction Updated Pricing 2/1/25

Budget/Scope balancing review: on -going

Leadership & User Group Work Sessions 2/10/25 – 6/6/25

Commissioning Review 5/1/25 – on-going

DOH permitting 7/14/25

Groudbreaking September 2025

Design Update – 1st Floor



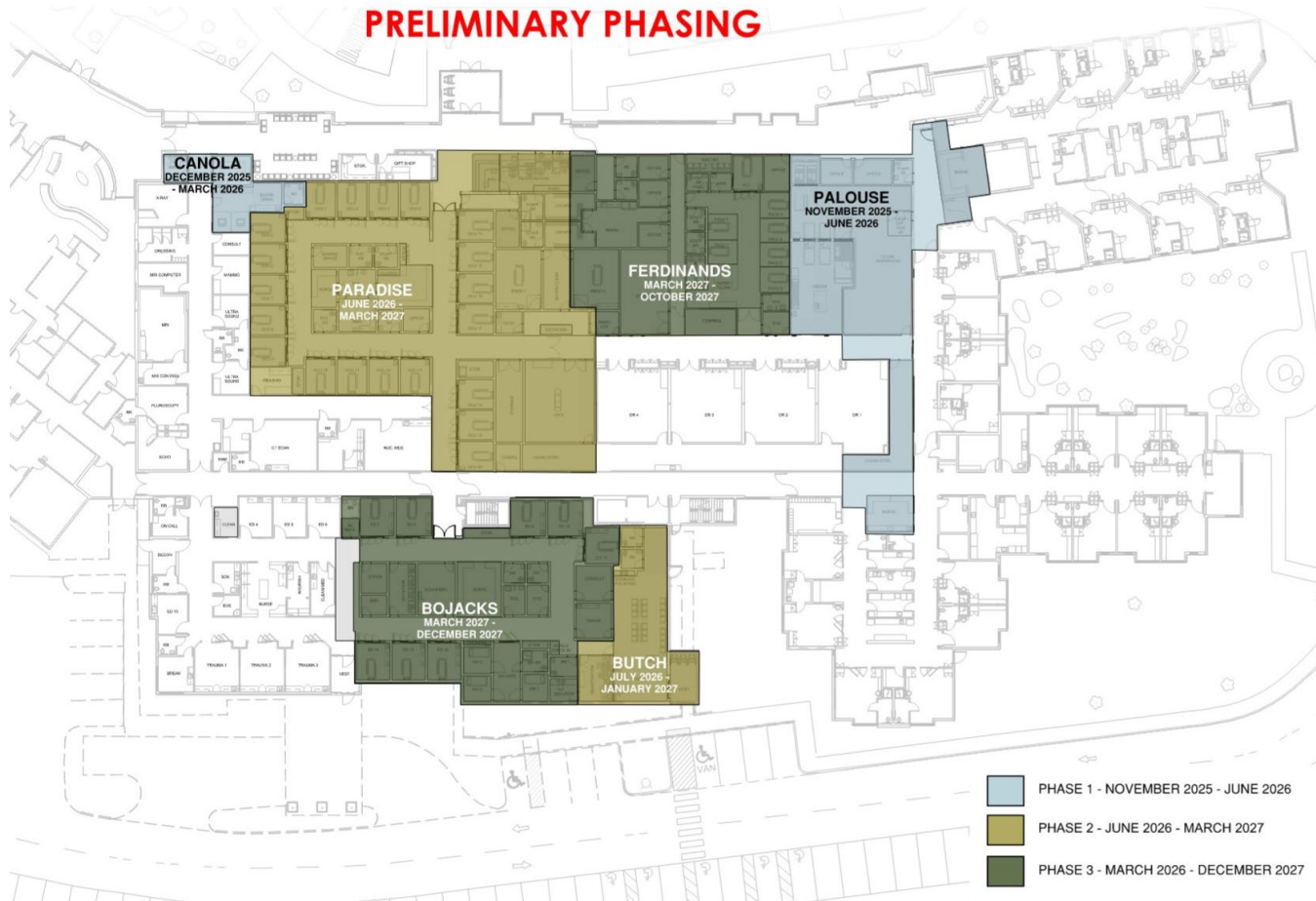
**PULLMAN
REGIONAL
HOSPITAL**



**PULLMAN
REGIONAL
HOSPITAL**

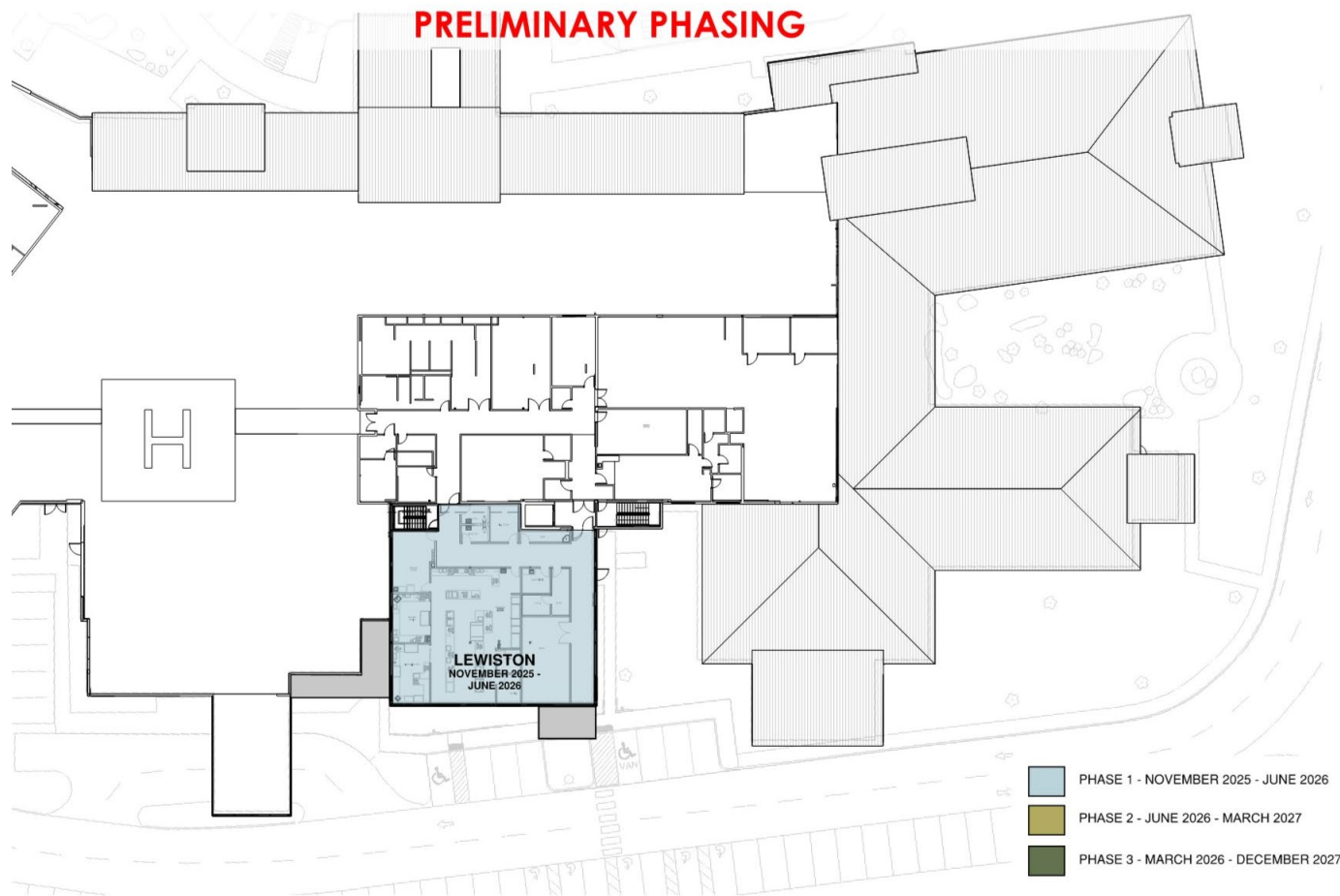
Phasing Plans – 1st Floor

PRELIMINARY PHASING



**PULLMAN
REGIONAL
HOSPITAL**

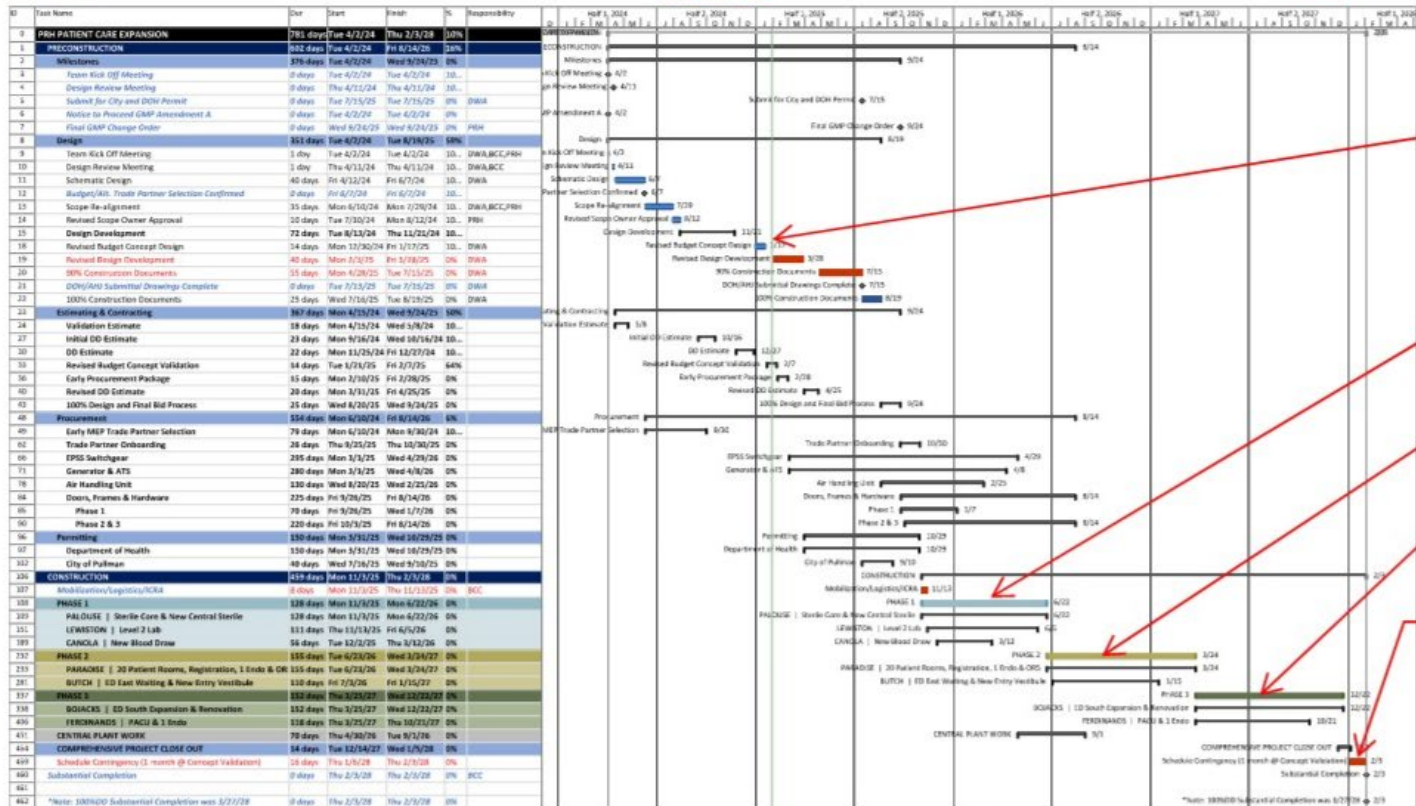
Phasing Plans – 2nd Floor



Project Schedule



PATIENT CARE EXPANSION
Pullman Regional Hospital
CONCEPT PHASE 1/2/3/4/5/6/7/8/9/10/11/12/13/14/15/16/17/18/19/20/21/22/23/24/25/26/27/28/29/30/31/32/33/34/35/36/37/38/39/40/41/42/43/44/45/46/47/48/49/50/51/52/53/54/55/56/57/58/59/60/61/62/63/64/65/66/67/68/69/70/71/72/73/74/75/76/77/78/79/80/81/82/83/84/85/86/87/88/89/90/91/92/93/94/95/96/97/98/99/100



TODAY, ON-GOING
DESIGN/COST
BALANCING

PHASE 1

PHASE 2

PHASE 3

CONSTRUCTION
COMPLETE 12/27
(8 MONTH REDUCTION)



PULLMAN
REGIONAL
HOSPITAL

On-Going Considerations

1. Work with Leadership & User Groups to refine design scope
2. Continued work on balancing budget and scope for the project
3. Reduce amount of deferred maintenance equipment replacements
4. FFE Coordination, related to the amount of new equipment
5. Future of Sleep Medicine & Cardio/Respiratory Rehabilitation
6. Future of scheduling, referrals, and pre-admit process

Thanks!

Questions?