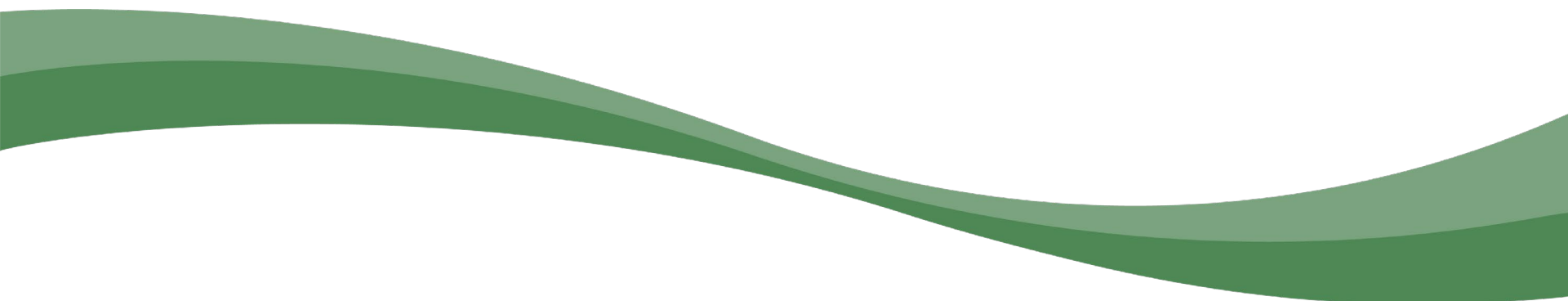




Expansion Project Status Update

February 5, 2025



Project Progress / Status

Design Development Complete 11/22/24

Bouten Construction Design Development Pricing 12/20/24

Design West revision options

Bouten Construction Updated Pricing 1/10/25

Design Team & Bouten Work Session 1/20/25

Bouten Construction Updated Pricing 2/1/25

Budget/Scope balancing review: on -going

Leadership & User Group Work Sessions 2/10/25 – 2/14/25

Design Update – 1st Floor



1st Floor New Construction	460 SF
1st Floor Renovation	25,775 SF
Total 1st Floor Project area	26,235 SF

PATIENT CARE SPACES

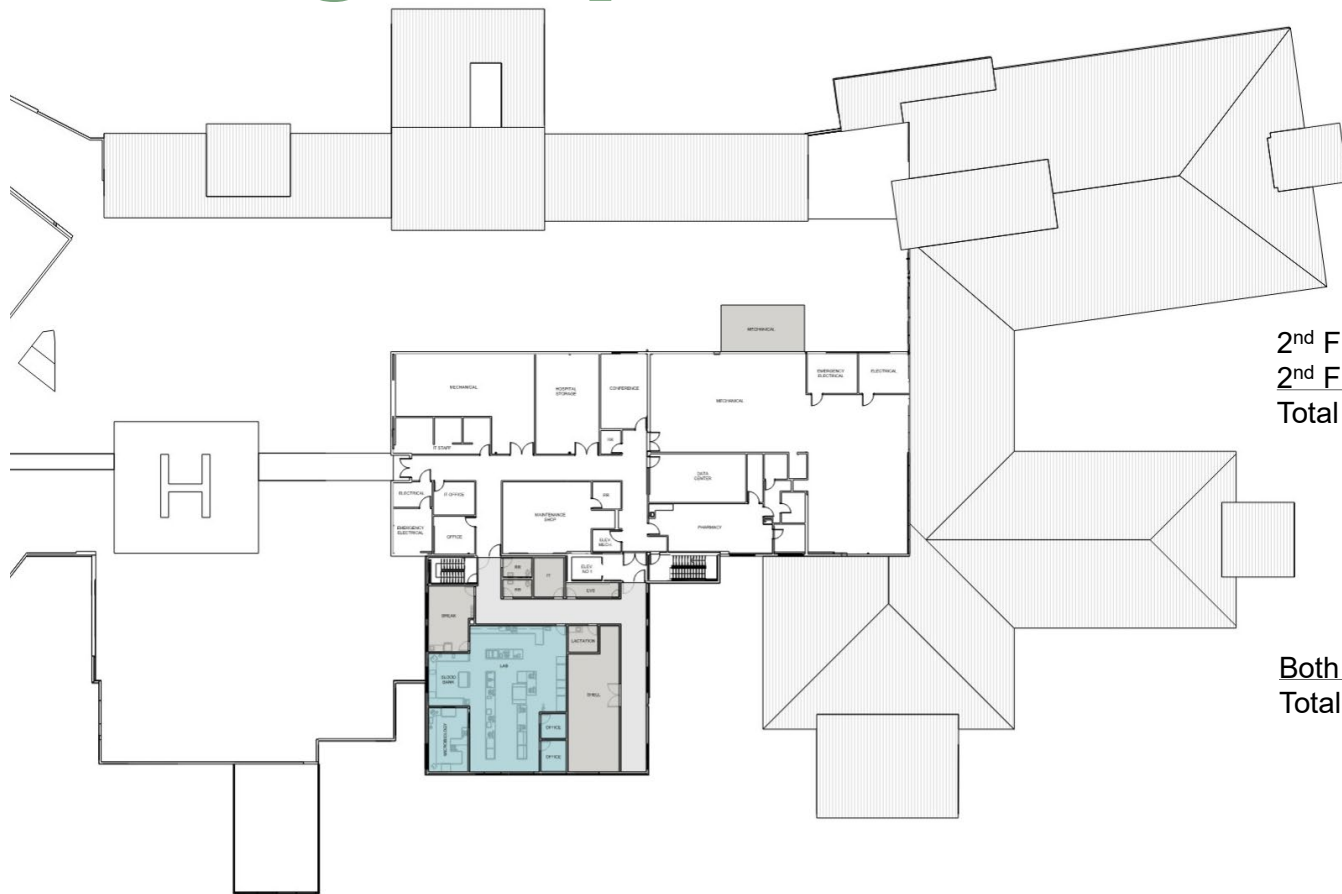
20 - OCU
7 - PACU
10 - ED
3 - MH
3 - TRAUMA
5 - Operating Rooms
2 - Endo/Procedure Rooms

50



**PULLMAN
REGIONAL
HOSPITAL**

Design Update – 2nd Floor

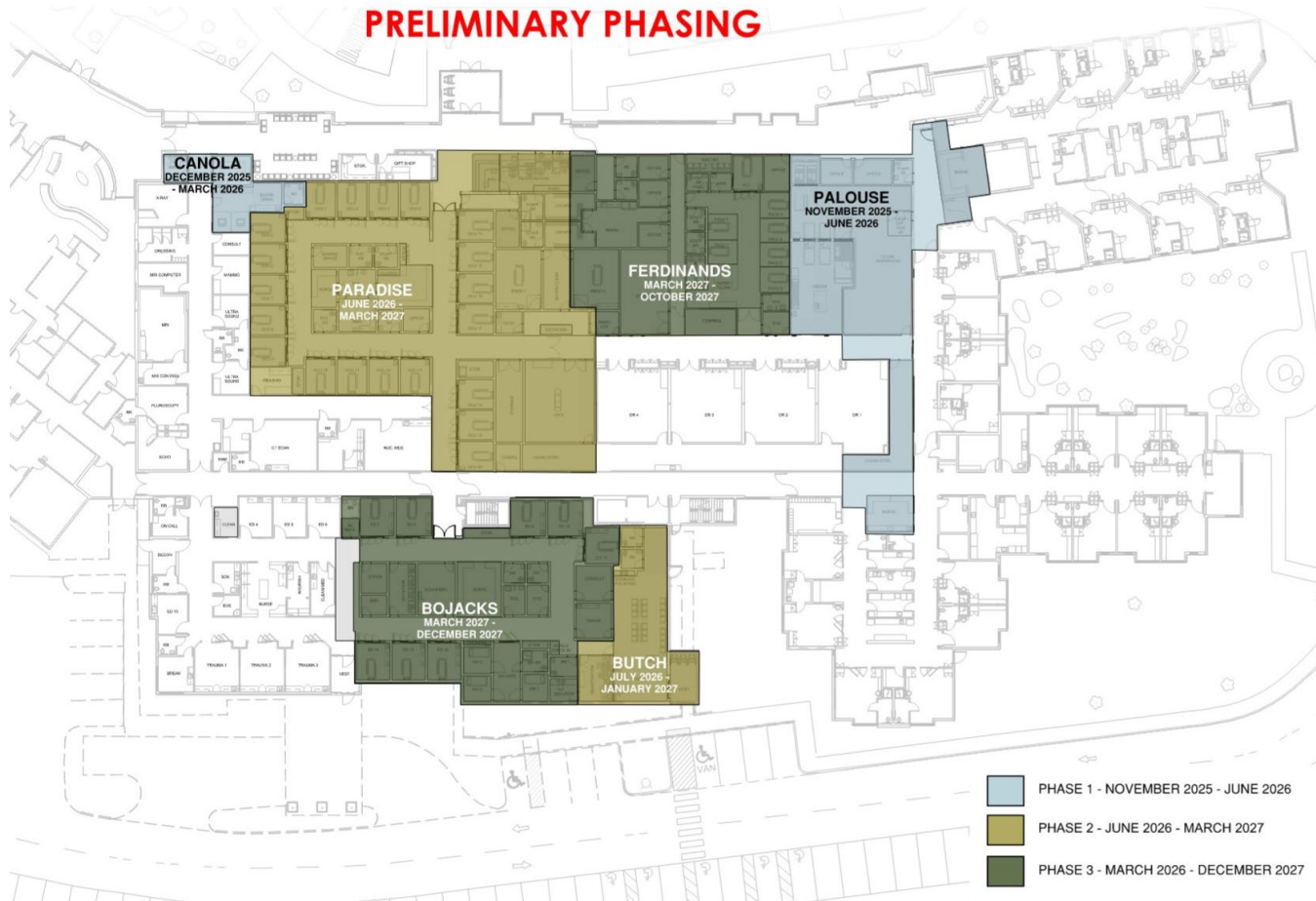


2 nd Floor New Construction	0 SF
2 nd Floor Renovation	3,900 SF
Total 2 nd Floor Project area	3,900 SF

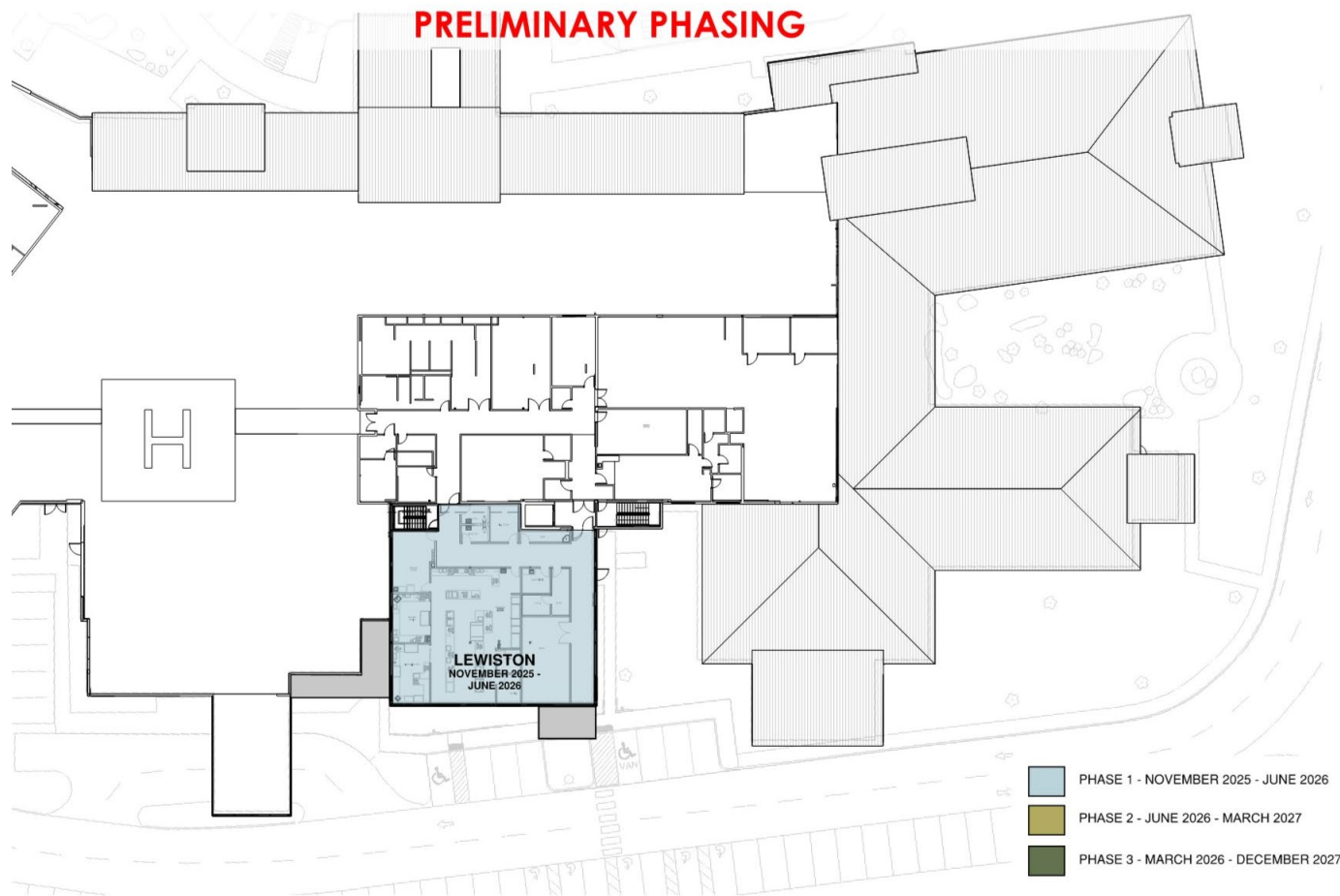
Both Floors	
Total Floor Project area	30,180 SF

Phasing Plans – 1st Floor

PRELIMINARY PHASING



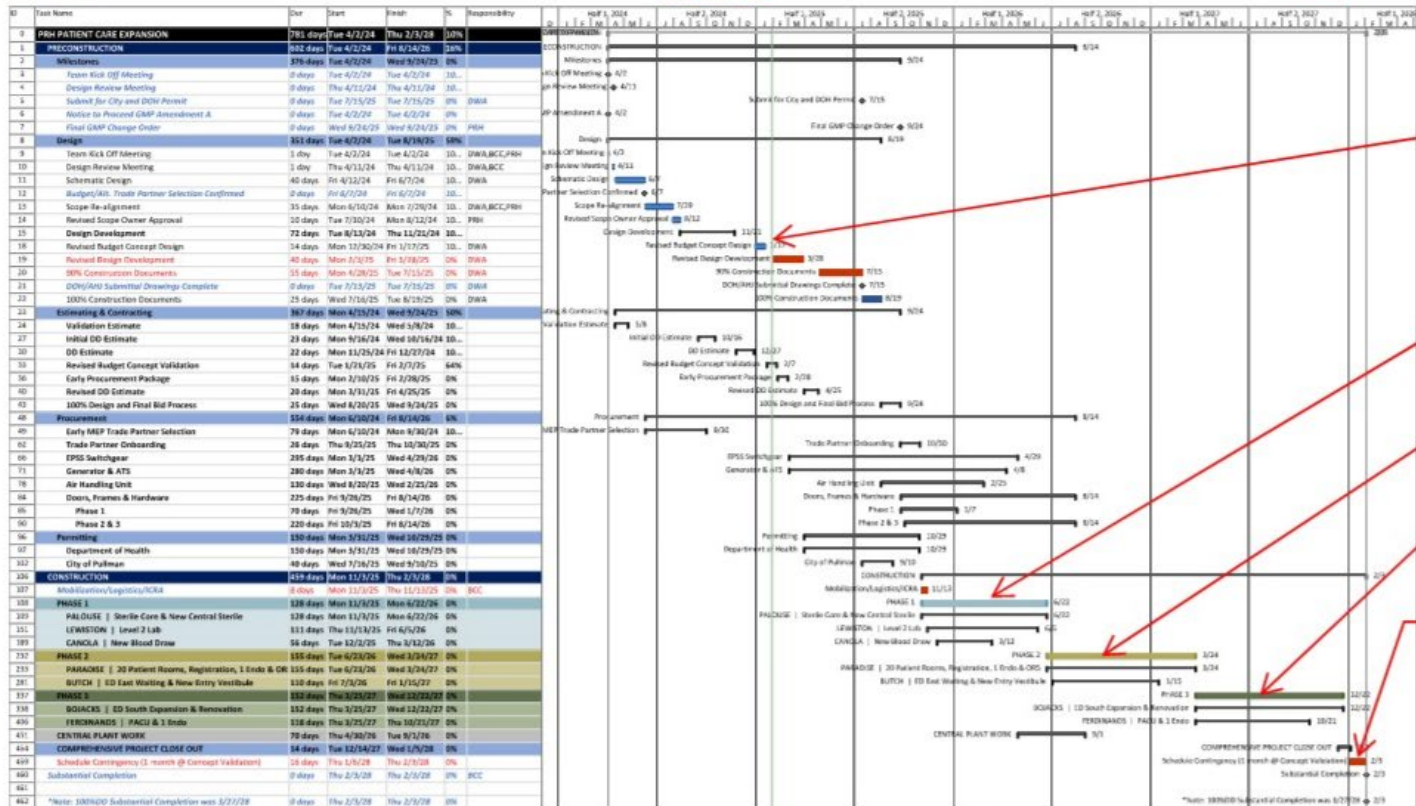
Phasing Plans – 2nd Floor



Project Schedule



PATIENT CARE EXPANSION
Pullman Regional Hospital
CONCEPT PHASE 1/2/3/4/5/6/7/8/9/10/11/12/13/14/15/16/17/18/19/20/21/22/23/24/25/26/27/28/29/30/31/32/33/34/35/36/37/38/39/40/41/42/43/44/45/46/47/48/49/50/51/52/53/54/55/56/57/58/59/60/61/62/63/64/65/66/67/68/69/70/71/72/73/74/75/76/77/78/79/80/81/82/83/84/85/86/87/88/89/90/91/92/93/94/95/96/97/98/99/100



TODAY, ON-GOING
DESIGN/COST
BALANCING

PHASE 1

PHASE 2

PHASE 3

CONSTRUCTION
COMPLETE 12/27
(8 MONTH REDUCTION)



PULLMAN
REGIONAL
HOSPITAL

On-Going Considerations

1. **Work with Leadership & User Groups to refine design scope**
2. **Continued work on balancing budget and scope for the project**
3. **Reduce amount of deferred maintenance equipment replacements**
4. **FFE Coordination, related to the amount of new equipment**
5. **Future of Sleep Medicine & Cardio/Respiratory Rehabilitation**
6. **Future of scheduling, referrals, and pre-admit process**