



# PATIENT CARE EXPANSION UPDATE

Less Wait, Less Travel, More Access to Exceptional Healthcare



### March 20, 2026 Update

## CONSTRUCTION AND WAYFINDING UPDATES:

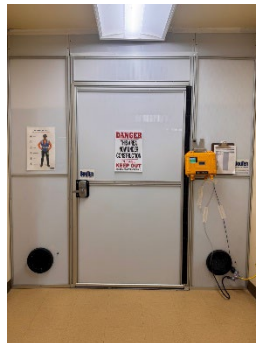
### Behind the Barriers

ICRA - Infection Control Risk Assessment barriers keep dirt, dust and noise contained during construction. You might be wondering what’s happening behind our containment barriers at the hospital.

### Lewiston Phase ICRA Barrier

April 2, 2024 – July 23, 2026

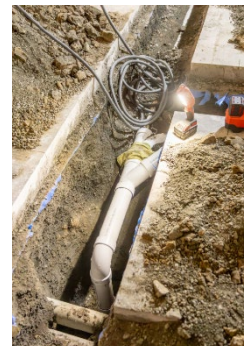
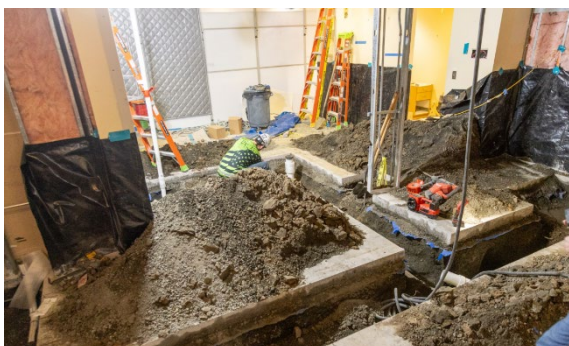
New lab, staff lounge, restrooms, lactation room, data center room and “shelled” space for future growth and connecting skybridge to adjacent property behind the hospital.



### Palouse Phase ICRA Barrier

November 17, 2025 – September 3, 2026

Located in the BirthPlace hallway, behind this barrier, we’re constructing a new central sterile and making room for a 5<sup>th</sup> operating room.





### Canola Phase ICRA Barrier

February 23 – End of April, 2026

Located in the outpatient waiting space and imaging report room, we're constructing a new blood draw station and start of our new centralized Same Day Services.



### Palouse Phase B.1 ICRA Barrier

March 2 – April 23, 2026

Located at the MSU Nurses' Station, behind this barrier, we're remodeling the nurses' station and making room for the expansion of surgical services.

## The Power Behind the Care: How Pullman Regional's Maintenance Team Keeps the Lights On



At Pullman Regional Hospital, extraordinary patient care depends on something most people never see—the steady, reliable hum of the hospital's infrastructure.

Behind the walls, above the ceilings, and below the floors, a dedicated maintenance team works around the clock to ensure that every light turns on, every surgical suite functions flawlessly, and every life-saving piece of equipment has the power it needs. Leading that effort is Director of Maintenance Pat Wuestney, whose team represents an extraordinary 123 years of combined experience among its senior members. Their work is quiet, technical, and often invisible—until the moment it matters most. "I joined Pullman Regional Hospital in 1987; at that time, it was Pullman Memorial, and we were on the WSU campus," recalls Pat. "Our community trusts Pullman Regional Hospital to be here when they need us most. Investing in reliable power and infrastructure is one of the most important ways we honor that trust."

### Investing in Reliability When It Matters Most

Hospitals cannot afford downtime. In healthcare, even a brief interruption in power can impact patient safety, critical procedures, and essential systems.

That's why Pullman Regional Hospital recently made a significant investment in a new backup generator and redundant power system. This upgrade ensures uninterrupted service during power outages, extreme weather, or unexpected utility disruptions.

Redundancy in a hospital setting means more than just having a backup—it means having layers of protection. If one system fails, another immediately takes over. Operating rooms remain operational. Life-support equipment continues running. Medication refrigeration stays stable. Information systems remain online. It's an investment not only in infrastructure, but in trust.

### Experience You Can Count On

The strength of the system is matched by the strength of the team behind it.

With 123 years of combined experience among senior team members, including Pat (39 years), Brad Cook (35 years), Bob McCleod (26 years) and Mike Sanderson (23 years), Pullman Regional's maintenance professionals bring institutional knowledge that can't be replicated. They understand the building's evolution, its mechanical systems, and the complexities of maintaining a healthcare environment where standards are uncompromising and the stakes are high.

"With our years of combined experience on our senior team, we understand how critical every system in this building is. We take pride in making sure everything runs safely and seamlessly, 24 hours a day," says Pat.

Their work supports every department—from the Emergency Department to surgical services, imaging, administrative offices, patient rooms, and clinics in Washington and Idaho. Patients may never meet the maintenance team. They won't see the generator systems or the hours of testing and inspection that happen behind the scenes. But they experience the results every day: a warm room during winter on the Palouse, lights that never flicker during surgery, and reliable systems that allow clinicians to focus on patient care.

At Pullman Regional Hospital, delivering safe, high-quality care requires a strong foundation—both structurally and operationally. Thanks to thoughtful investment in infrastructure and the leadership of Pat Wuestney and his experienced team, that foundation is secure.

Because when it comes to healthcare, power isn't optional—it's essential.

## UP NEXT:

---

### Electrical Work

- To grow and connect our systems for the Patient Care Expansion Project, our electrical systems will be under construction mid-April at the hospital
- All emergency lighting will be functional in the hospital; some overhead lighting (white light switch) will be impacted and some white outlets will be impacted.
- MORE INFO COMING SOON

**March:** Wall coverings in Palouse (Central Sterile) Phase.

**March:** Underground plumbing in Canola (Lab draw/SDS) Phase.

**April:** Construction on BirthPlace nurses' station and enhanced security systems.

## PROJECT PROGRESS REPORT:

---



### DEPARTMENTS LEGEND

|                     |                             |
|---------------------|-----------------------------|
| IMAGING             | LAB                         |
| REGISTRATION/PUBLIC | MSU/ICU                     |
| RESPIRATORY THERAPY | BIRTHPLACE                  |
| SURGERY/SAME DAY    | CARE COORDINATION/NUTRITION |
| CENTRAL STERILE     | STAFF SUPPORT               |

**15%**  
**COMPLETE**



**Stay in the know:**  
[pullmanregional.org/internal](http://pullmanregional.org/internal)