



PULLMAN
REGIONAL
HOSPITAL

PATIENT CARE EXPANSION UPDATE

Less Wait, Less Travel, More Access to Exceptional Healthcare

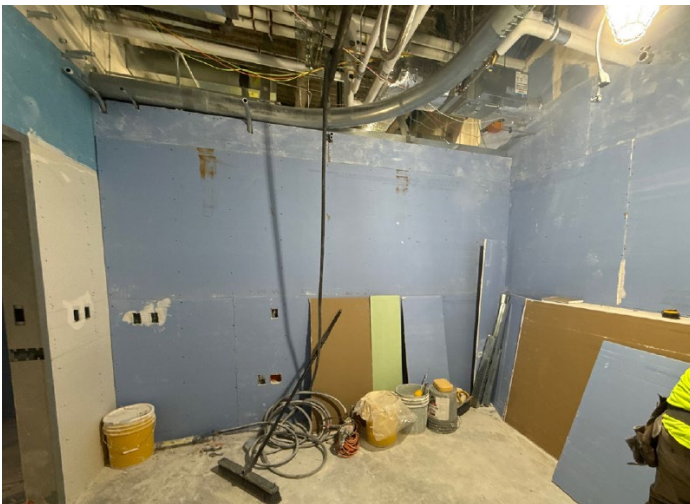
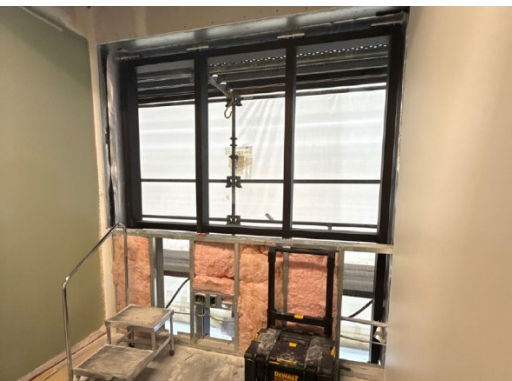


April 24, 2026 Update

CONSTRUCTION AND WAYFINDING UPDATES:

Work in Progress: Lewiston Phase

The Lewiston Phase (2nd floor lab) is on track to be completed late June! Plans to start moving and calibrating equipment are slated around June 22/23 with a “go live” in the new second floor space of late July.



Work in Progress: Canola Phase

After a few changes to widen the door for easier wheelchair access, the new blood draw station on the first floor is on track for a “move in” date in June!

UP NEXT:

Electrical Work

- To grow and connect our systems for the Patient Care Expansion Project, our electrical systems will be under construction **Tuesday May 5 (6pm to 11pm)**
- All emergency lighting will be functional in the hospital; some overhead lighting (white light switches) will be impacted and some white outlets will be impacted. All department leaders will have a detailed impact report for how this impacts their space and patient care.

May: Finishes in Canola (new lab draw station)

May: Flooring installation in Lewiston (new Lab on 2nd floor)

May: Exterior curtain wall installation (building exterior for new 2nd floor lab).

PROJECT PROGRESS REPORT:



DEPARTMENTS LEGEND

IMAGING	LAB
REGISTRATION/PUBLIC	MSU/ICU
RESPIRATORY THERAPY	BIRTHPLACE
SURGERY/SAME DAY	CARE COORDINATION/NUTRITION
CENTRAL STERILE	STAFF SUPPORT

15%
COMPLETE



Stay in the know:
pullmanregional.org/internal