

PATIENT CARE EXPANSION UPDATE

Less Wait, Less Travel, More Access to Exceptional Healthcare



June 19, 2026 Update

CONSTRUCTION AND WAYFINDING UPDATES:

As we approach the end of June, the finish line for Phase I of our project is in sight. Our new second-story laboratory, lactation room, restrooms, breakroom and central sterile are nearly complete and ready for inspection then move-in.



Our Laboratory Department will be moving the week of June 22. During this time, there will be some delays in testing and results. Please refer to the communication from Michelle Reynolds, Laboratory Assistant Director, or talk to your manager about impact and mitigation plans.

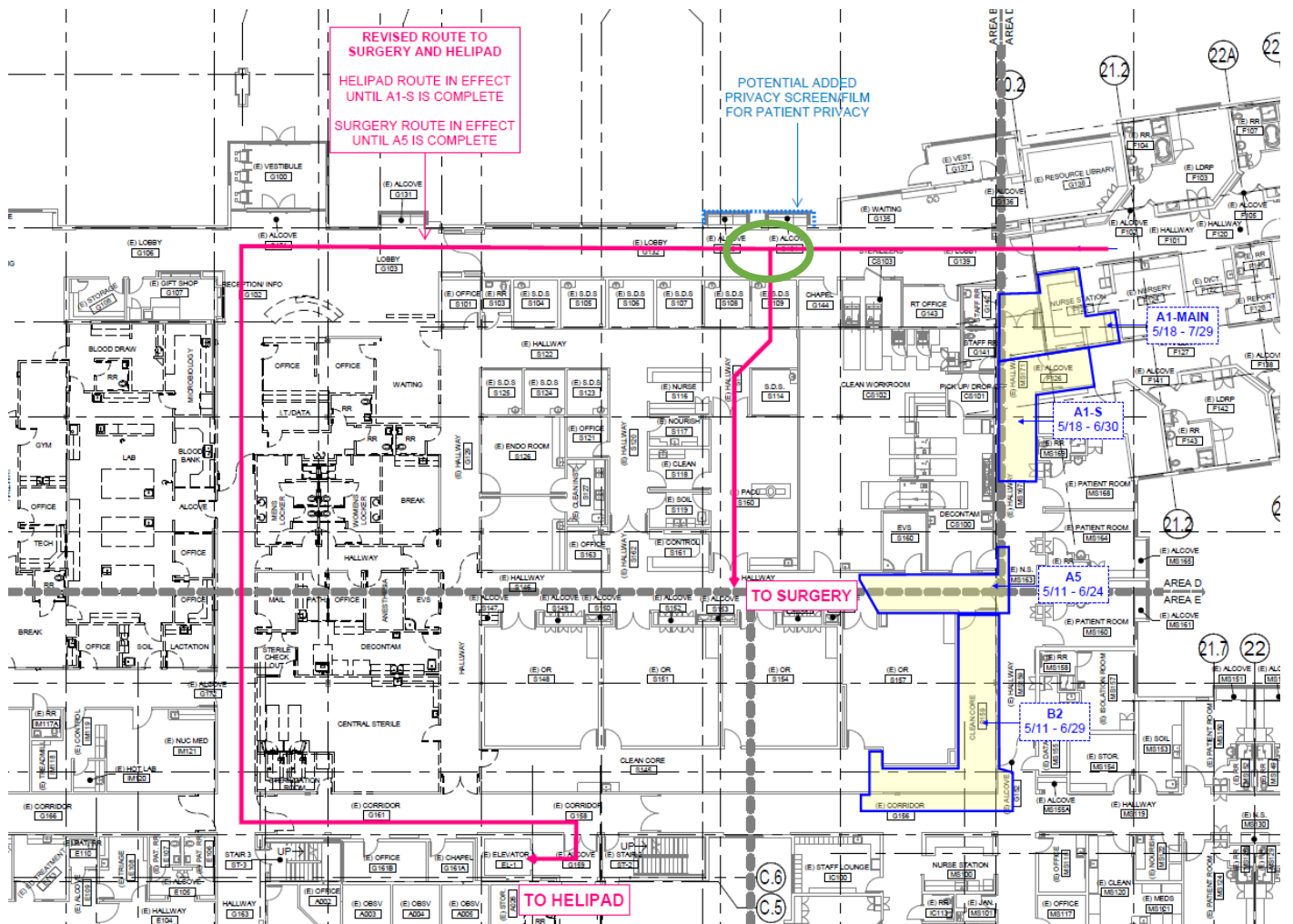
IN PROGRESS:

BirthPlace route changes: now to 7/13/2026

- Continued from previous week: alternate route to access the operating room
 - Access the OR via front hallway – **green circle** on the map; route is in **pink**
- New route to helipad
 - Single entry/exit via front hallway
 - Emergency exits still operational
- New code and emergency response routes
 - Access BirthPlace via front hallway

The side of the nurse's station, closest to storage room will be under construction (A1-S), meaning single door entry/exit to BirthPlace.

LifeFlight will have to utilize the main hospital hallway for 6 weeks if we have a transfer. We will be proactive in educating the patient, if a maternal transfer and ensure privacy measures. Examples: covered with additional blankets, mask to shield privacy, asks for less people to be present in the waiting area. The new route can be seen in **pink**.



UP NEXT: PHASE II

Paradise Phase – New centralized registration, Same Day, OR 5, and 2 endoscopy suites

Thursday, June 25:

- Main entrance check-in/registration moves to conference rooms A/B (through October 2026)
- Staff main entrance with a screener; added wayfinding for public restrooms and check-in

Monday, July 13:

- ICRA barriers will be placed and construction will start, displacing the following functions in the weeks leading up to July 13. Move-outs will occur June 29-July 12 for these areas:
 - 2 public restrooms
 - Use public restrooms by conference rooms
 - Dictation room (former mailroom)
 - Surgery waiting area
 - Designated patient/visitor waiting area near BirthPlace near “portal” door
 - Surgery locker rooms and break room
 - Temporarily moving to 2nd floor (9 months)
 - Anesthesia, Pathology & Materials
 - Anesthesia temporarily moving to “new” chapel by BirthPlace
 - Pathology temporarily moving to new lab on 2nd floor
 - Materials moving to Andrew’s office in Safety Huddle hallway
 - Hallway from main entrance to ED
 - Use “portal” door to access/exit surgery and Same Day
 - Use Red Sage back hallway door or door between garbage cans and conference Room A to access MSU, ICU, ED
 - Use auto-open doors from back hallway to/from Imaging to access/exit Imaging; the remodeled outpatient waiting area will be complete before July 13 with access to/from Imaging
 - Cardio/pulmonary rehab gym
 - Moving to Summit Therapy
 - In-hospital overnight sleep studies
 - Moving to MSU
- Changes in patient/visitor waiting workflow:
 - After checking in at conference rooms A/B, all imaging, lab and surgery/same day patients and visitors will wait in remodeled outpatient waiting area; surgery/same day patients/visitors will be escorted by same day staff to designated surgery/same day waiting area near BirthPlace and “portal” door

Late August:

- Public hallway access from BirthPlace hallway to MSU returns



Stay in the know:
pullmanregional.org/internal

Canola
2/26-7/26

Paradise
7/26-4/27

Ferdinands
5/27-12/27

Palouse
11/25-7/26

A1
6/26-9/26

Bojacks
5/27-12/27

Butch
7/26-2/27

LEGEND

- IMAGING
- REGISTRATION/PUBLIC
- RESPIRATORY THERAPY
- SURGERY/SAME DAY
- CENTRAL STERILE
- LAB
- MSU/ICU
- BIRTHPLACE
- CARE COORDINATION/NUTRITION



OVERALL FIRST FLOOR PLAN

Scale : 1/32" = 1'-0"

